

# Small Fruit Meeting

October 1-3, 2013



Fairlee, VT



# Strawberry



Sample: #704 – Commercial Grower  
Date received: 6/04/13  
Diagnosis: Slime mold

# Strawberry



Sample: #713 – Commercial Grower

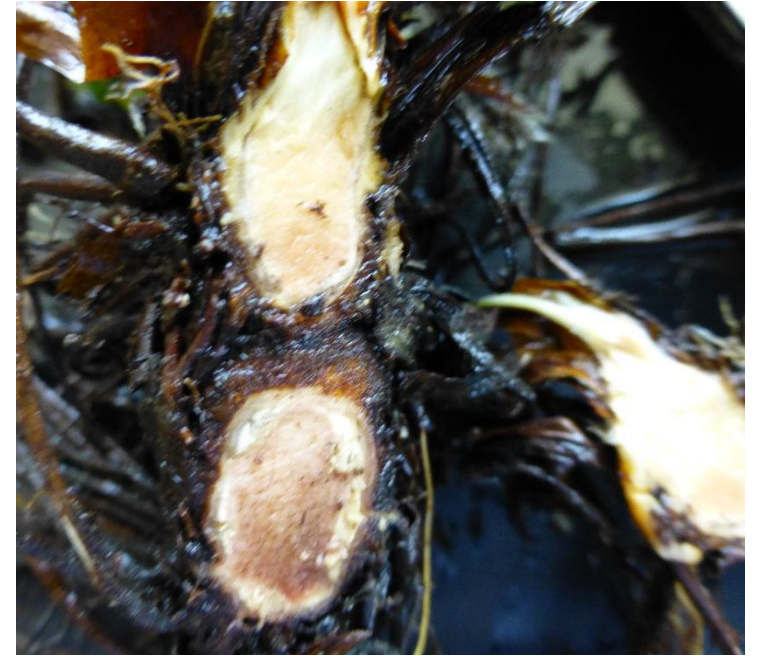
Date received: 6/07/13, 9/27/13

Diagnosis:

- Leaves: Leaf Spot (*Mycosphaerella fragarrie*)
- Roots:
  - *Rhizoctonia* sp.
  - *Phytophthora* sp.(Red Stele)



# Strawberry

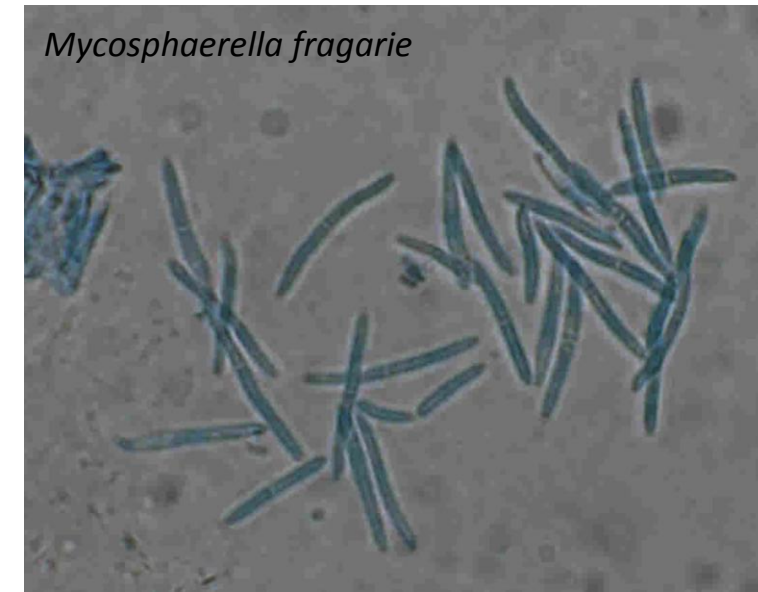


Sample #743 - Commercial

Date received: 6/20/13

Diagnosis: Winter Damage (no pathogens detected)

# Strawberry



Sample #747 - Commercial

Date received: 6/20/13

Diagnosis:

- Leaves: and Stems: *Mycosphaerella fragariae*
- Fruit: *Cercospora fragariae* and *M. fragariae*

# Blueberry



Sample #631 – Home Gardener  
Date received: 4/03/13  
Diagnosis: Witches' Broom



Sample # 730 –Commercial Grower  
Date received: 6/14/13  
Diagnosis: Septoria Leaf Spot (*Septoria albopunctata*)

# Blueberry

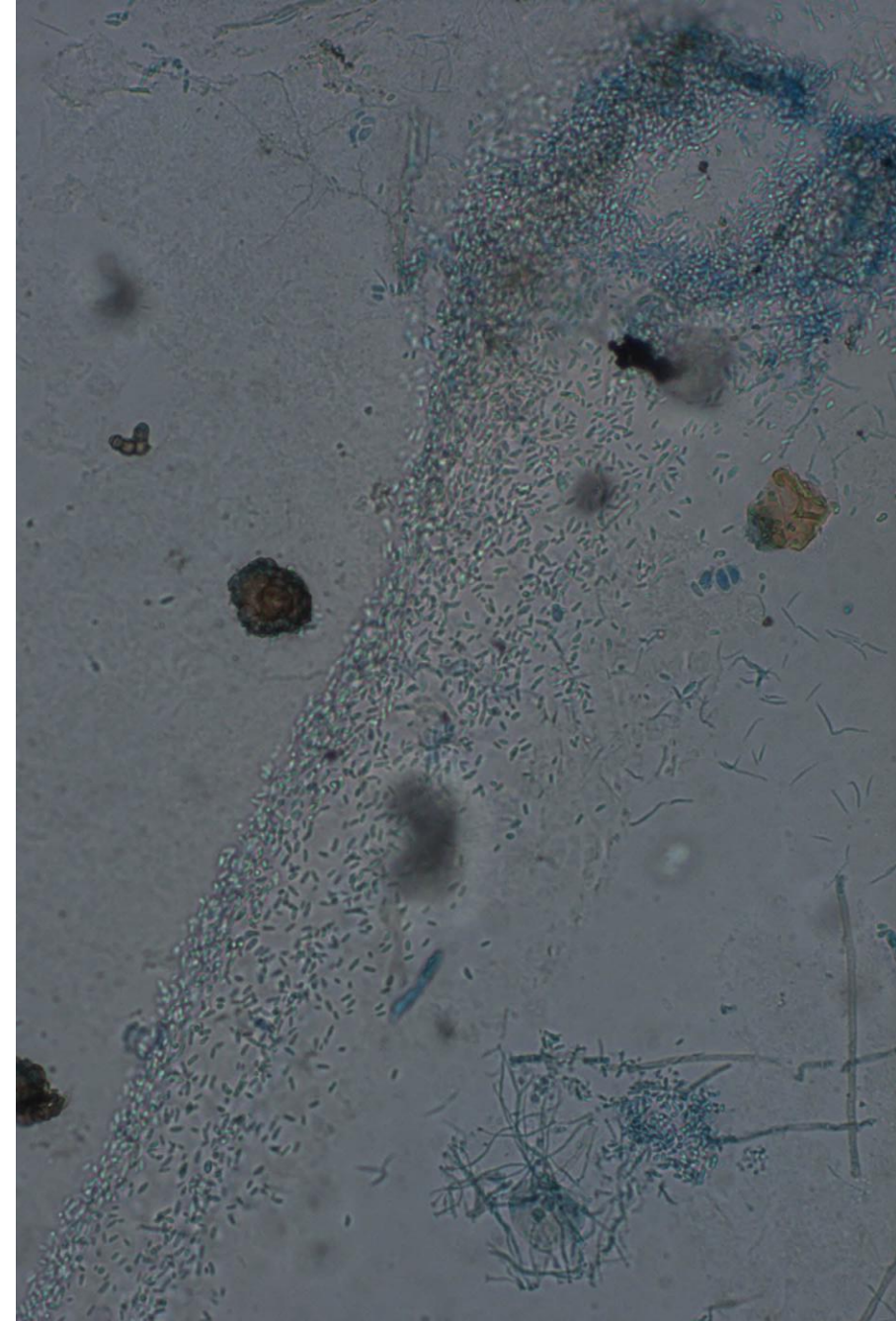


Sample #711 and 732 – Commercial Growers

Date received: 6/6 and 6/18/13

Diagnosis:

- Stems/branches: Phomopsis twig blight (*Phomopsis vaccinii*)



# Blueberry



Sample #735 – Commercial Grower

Date received: 6/18/13

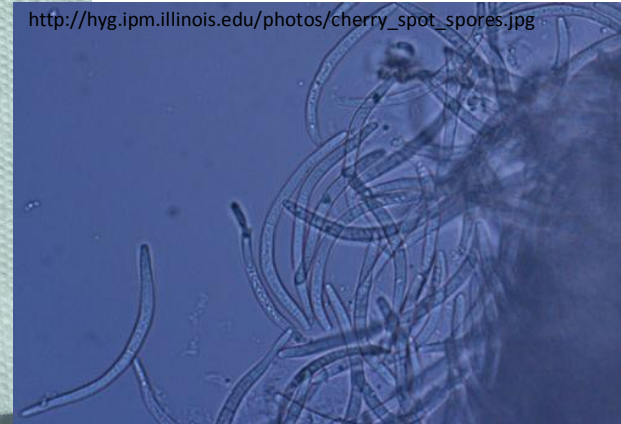
Diagnosis:

- Leaves: Iron Deficiency

# Cherry



[http://hyg.ipm.illinois.edu/photos/cherry\\_spot\\_spores.jpg](http://hyg.ipm.illinois.edu/photos/cherry_spot_spores.jpg)



Sample #953: Home Gardener

Date received: 9/5/13

Diagnosis: Cherry Leaf Blight, Shothole (*Blumeriella jaapii*)



# Grape



Sample #968 – Commercial Grower

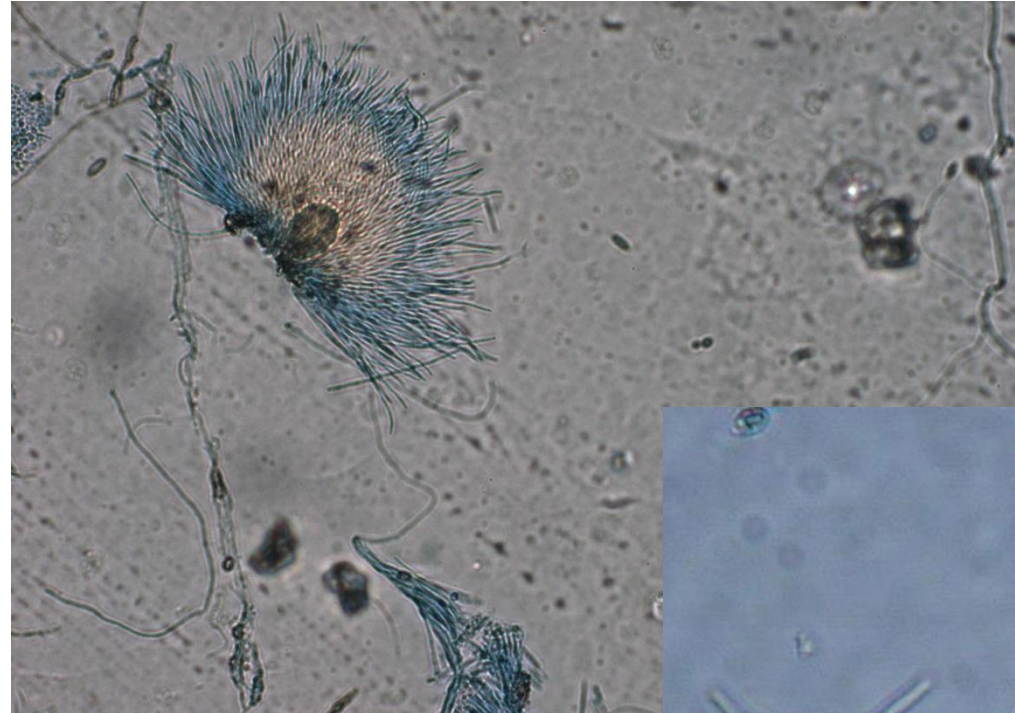
Date received: 9/22/13

Diagnosis:

- Grape Anthracnose: *Elsinoe ampelina*

# Red Northern Currant

Blackberry leaf



Sample #867 – Home Gardener

Date received: 7/30/13

Diagnosis:

- Leaves: Currant Leaf Spot (*Mycosphaerella ribis*)

# Raspberry



Sample #791: Home Gardener

Date received: 7/11/13

Diagnosis: Spur blight (*Dydymella applanata* = *Phoma aragillacea*)

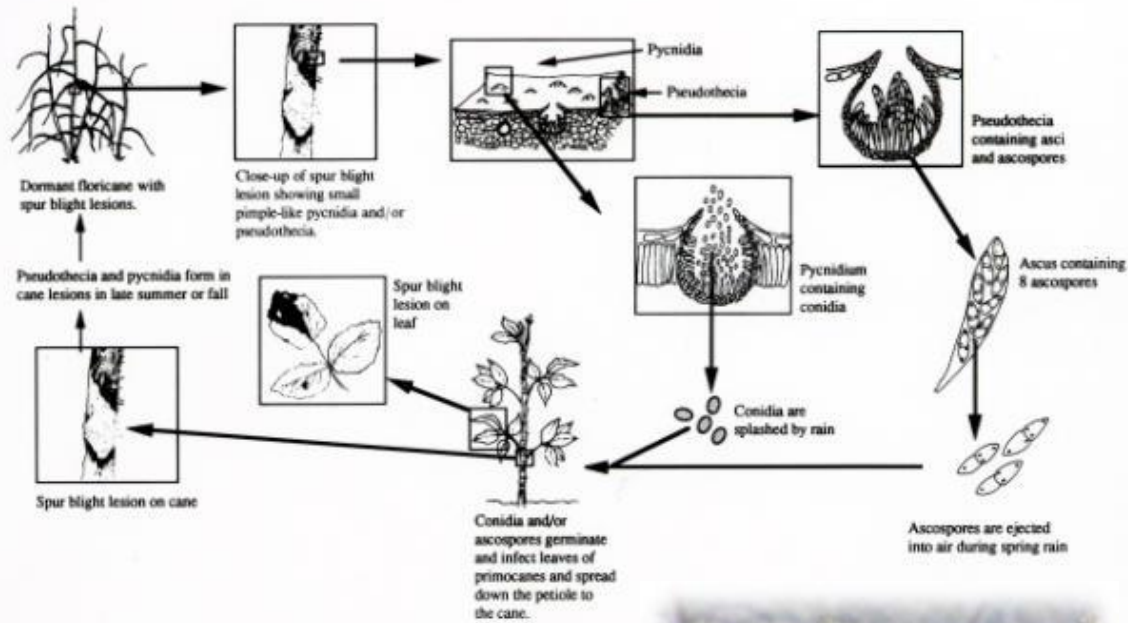


Sample #791: Home Gardener

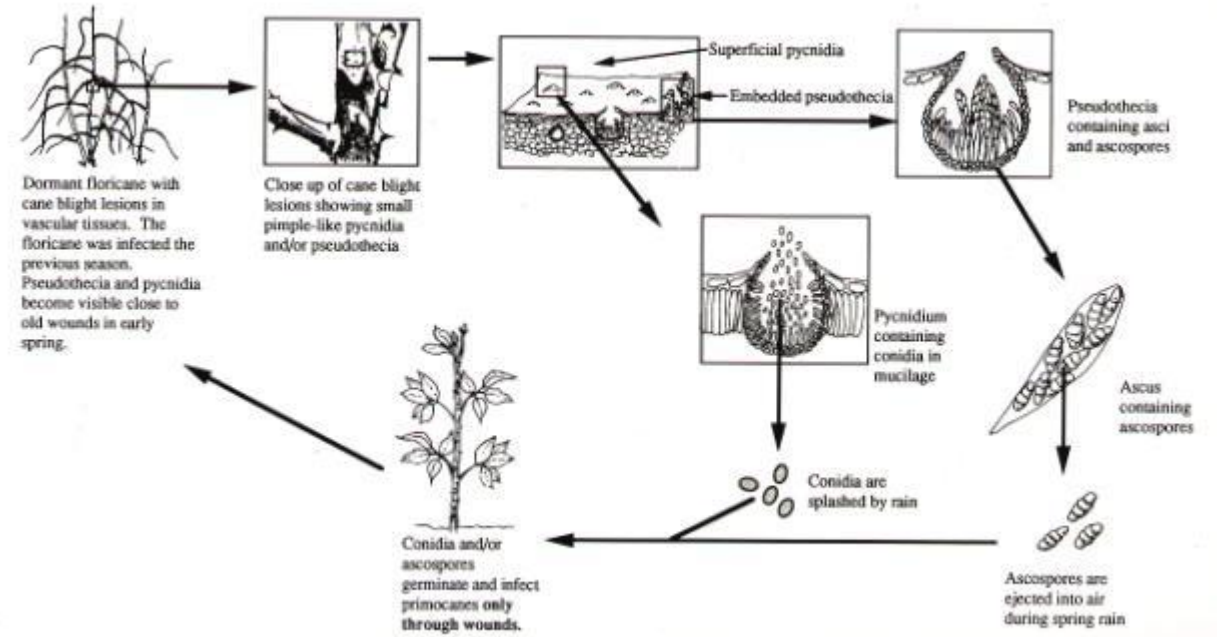
Date received: 7/11/13

Diagnosis: Cane blight (*Leptosphaeria coniothyrium* = *Coniothyrium fuckelli*)

# Raspberry



Sample #791: Home Gardener  
 Date received: 7/11/13  
 Diagnosis: Spur blight  
 (*Dydymella applanata* = *Phoma aragillacea*)



Sample #791: Home Gardener  
 Date received: 7/11/13  
 Diagnosis: Cane blight  
 (*Leptosphaeria coniothyrium* = *Coniothyrium fuckelli*)