

Intensity and Characteristics of a Home Invasion – A Case Study



Doug Inkley



Doug Inkley, Ph.D.
Senior Scientist
National Wildlife Federation

NWF Invasive Species Agenda

Lacey Act Amendments

- Streamline wildlife screening procedures
- Regulate invasive constrictor snakes

Ballast Water Rules and EPA Vessel Permits

USDA/APHIS Quarantine 37

Great Lakes – Asian carp

National Environmental Coalition on Invasive Species (NECIS) www.necis.net

Winter



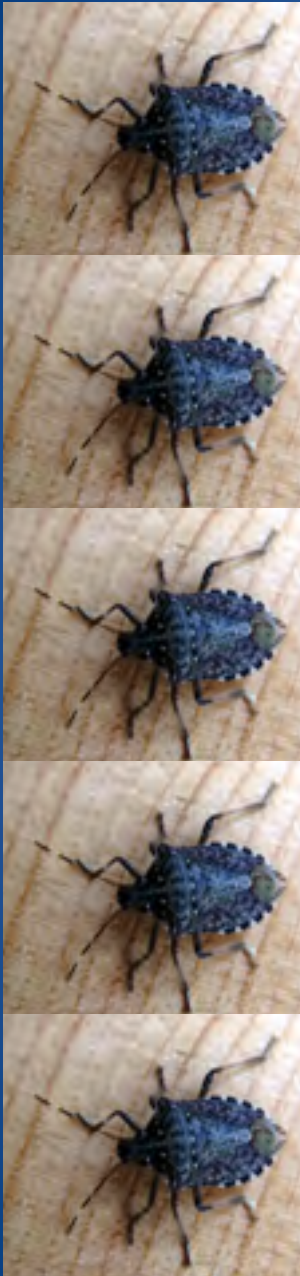
Doug Inkley

How many BMSBs am I living with?

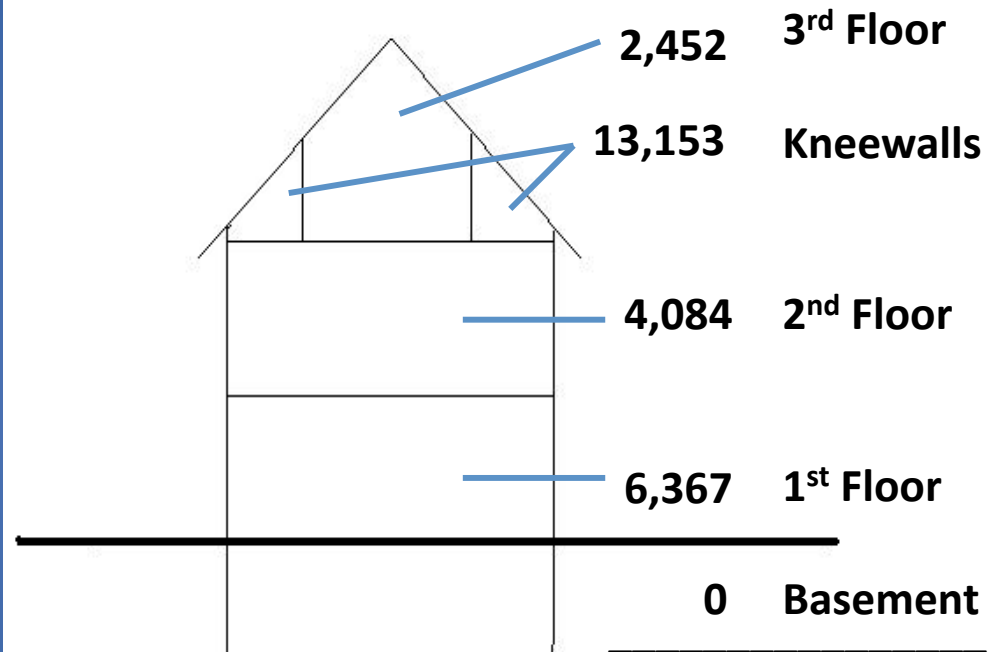
Method: Daily collection

Research Tool:





January 1, 2011 – May 31, 2011



26,056 Total

173/day or 7/hour

Doug Inkley



Doug Inkley



Doug Inkley



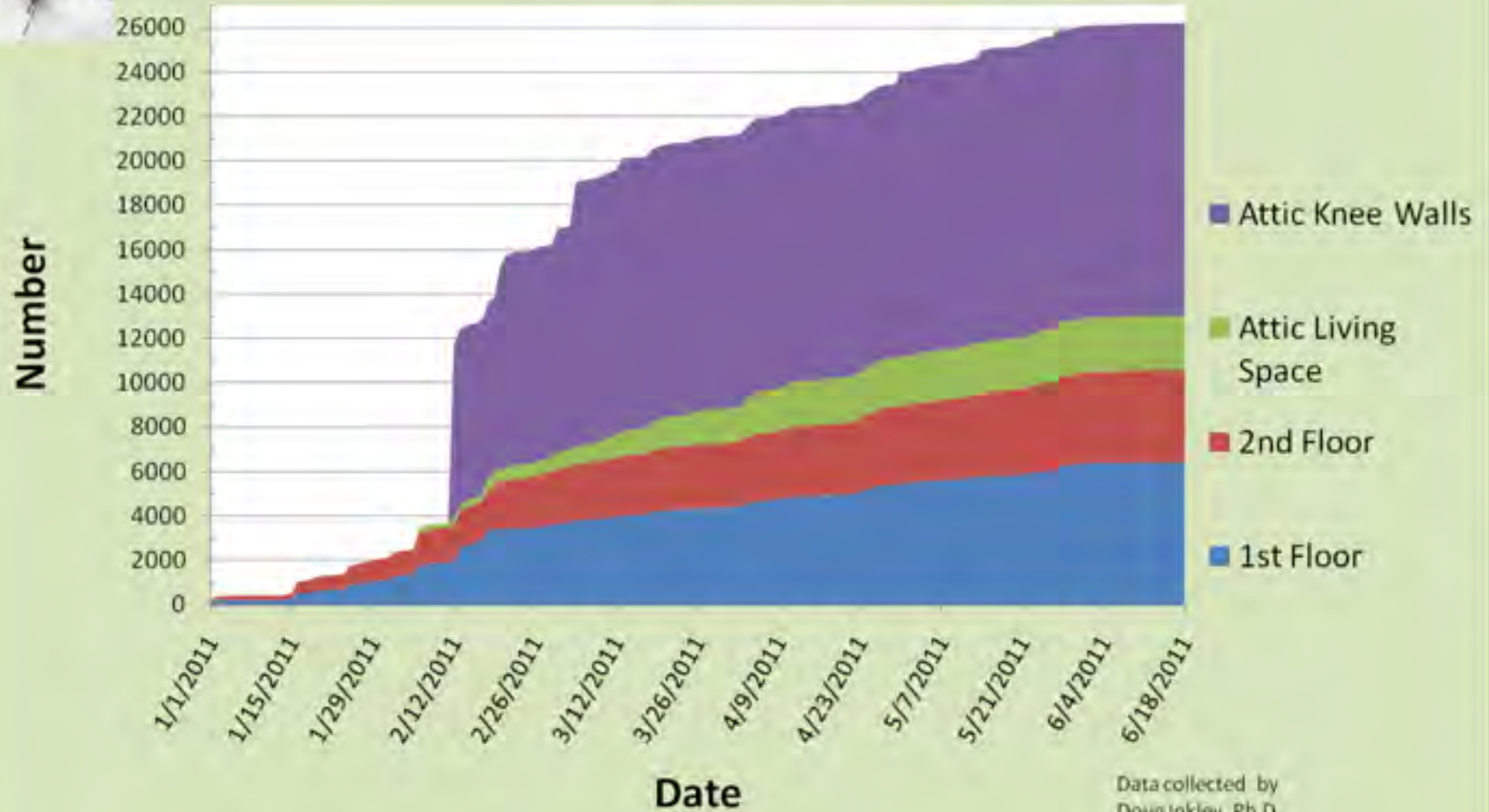
Doug Inkley



Doug Inkley



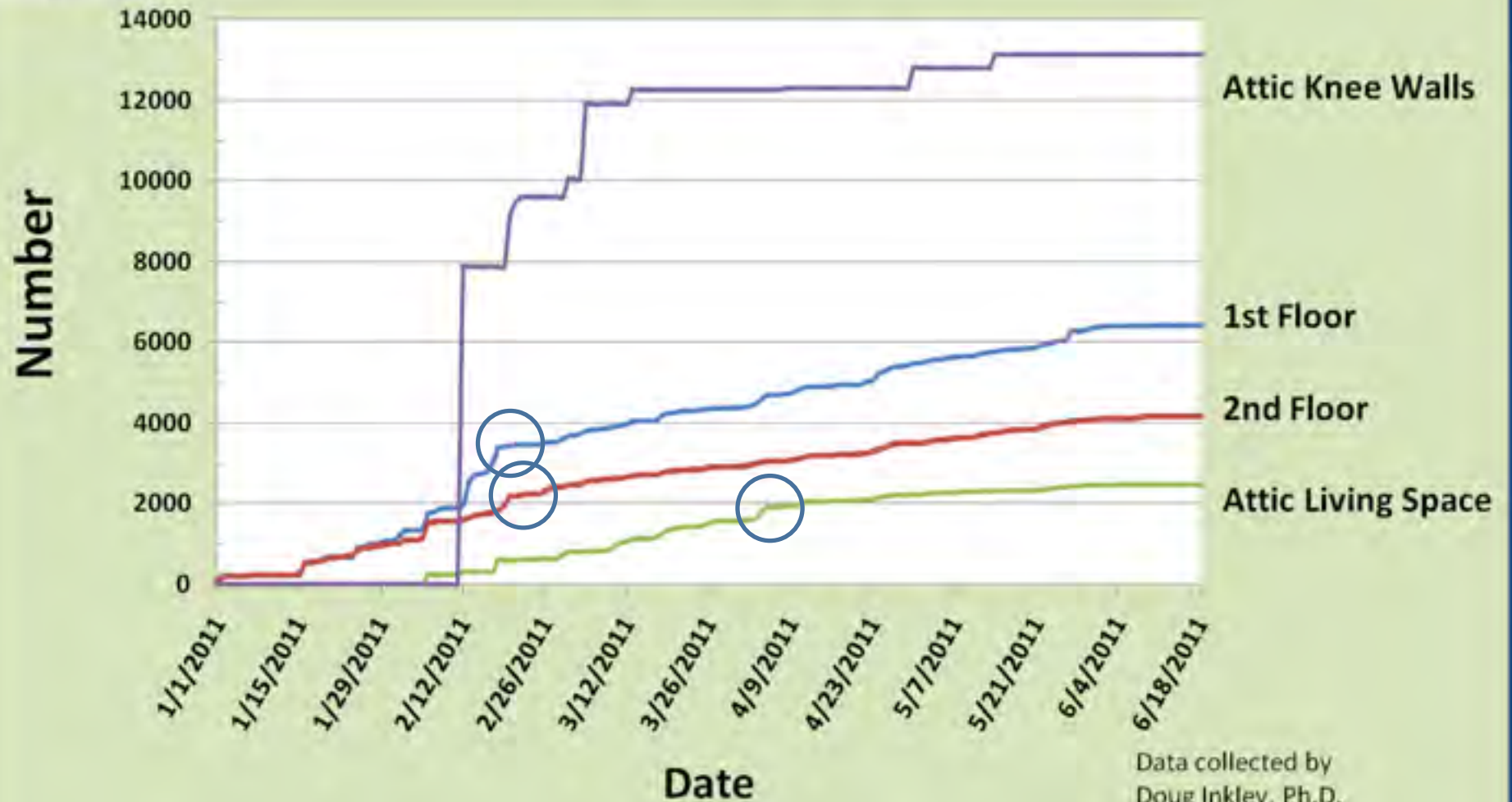
Brown Marmorated Stink Bugs in a Maryland Home 1/1/2011-6/18/2011



Data collected by
Doug Inkley, Ph.D.
Senior Scientist
National Wildlife Federation



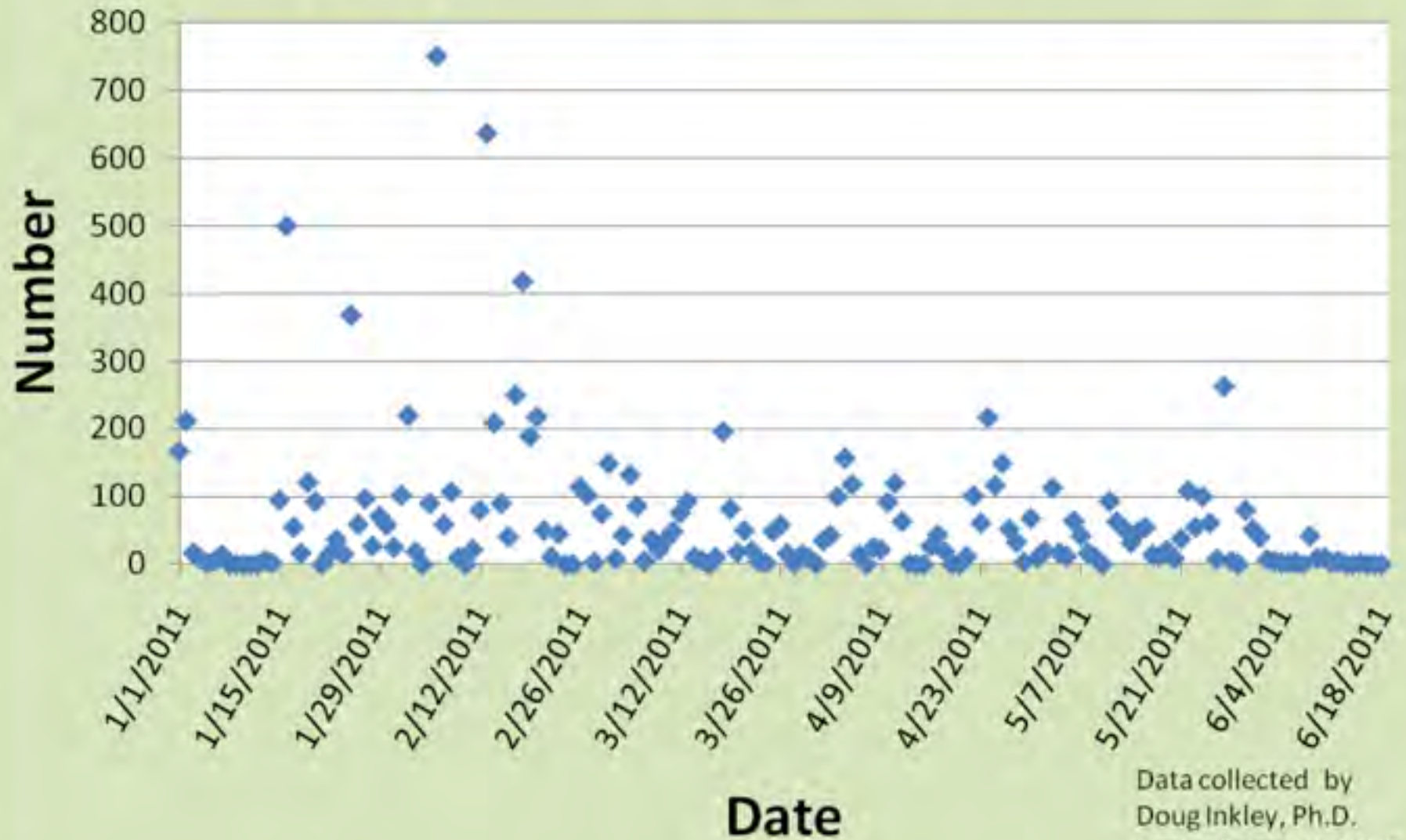
Brown Marmorated Stink Bugs in a Maryland Home 1/1/2011-6/18/2011



Data collected by
Doug Inkley, Ph.D.
Senior Scientist
National Wildlife Federation

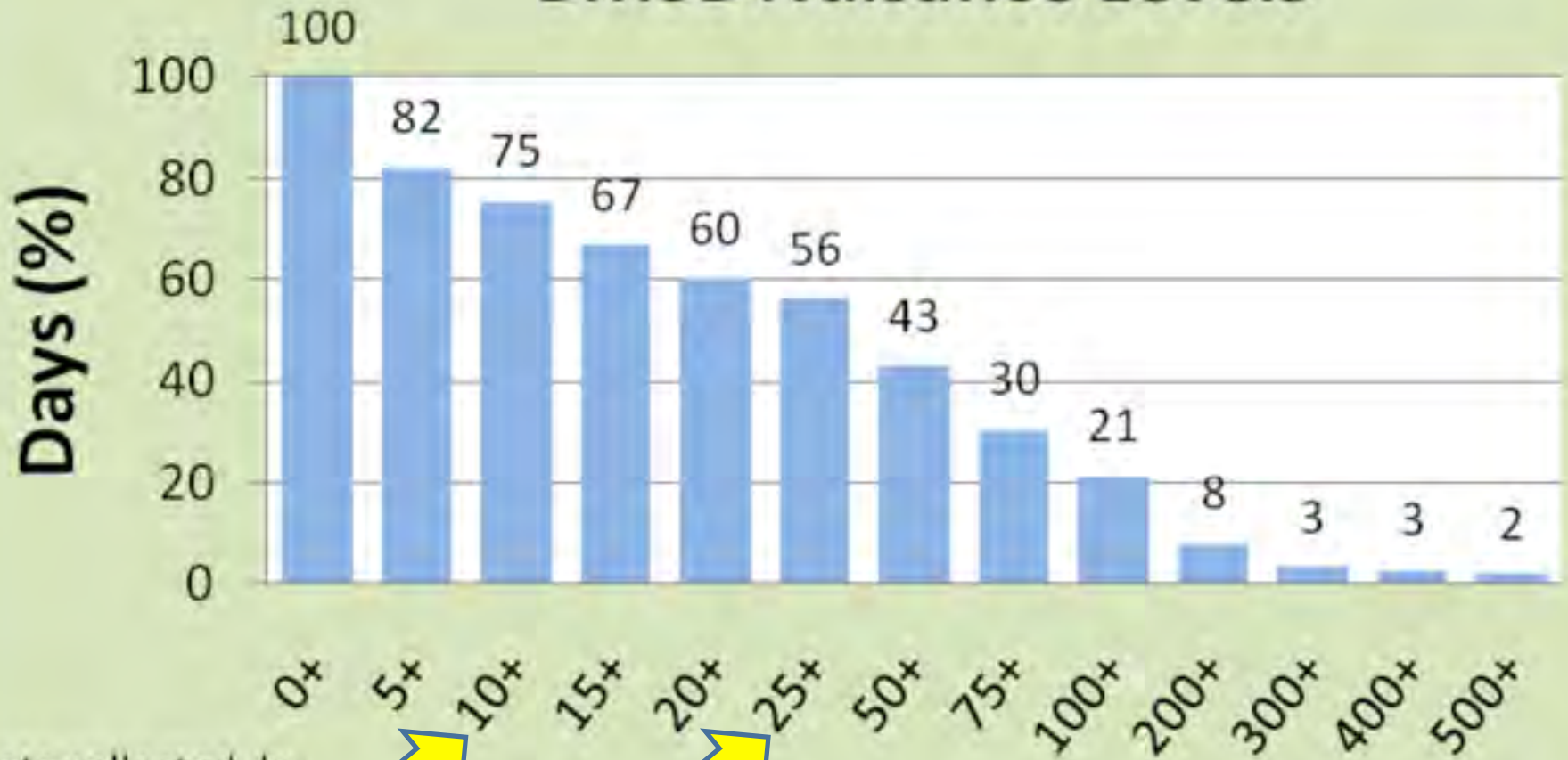
Brown Marmorated Stink Bugs in a Maryland Home

January 1, 2011- June 18, 2011 (1st & 2nd Floor)



Data collected by
Doug Inkley, Ph.D.
Senior Scientist, NWF

BMSB Nuisance Levels

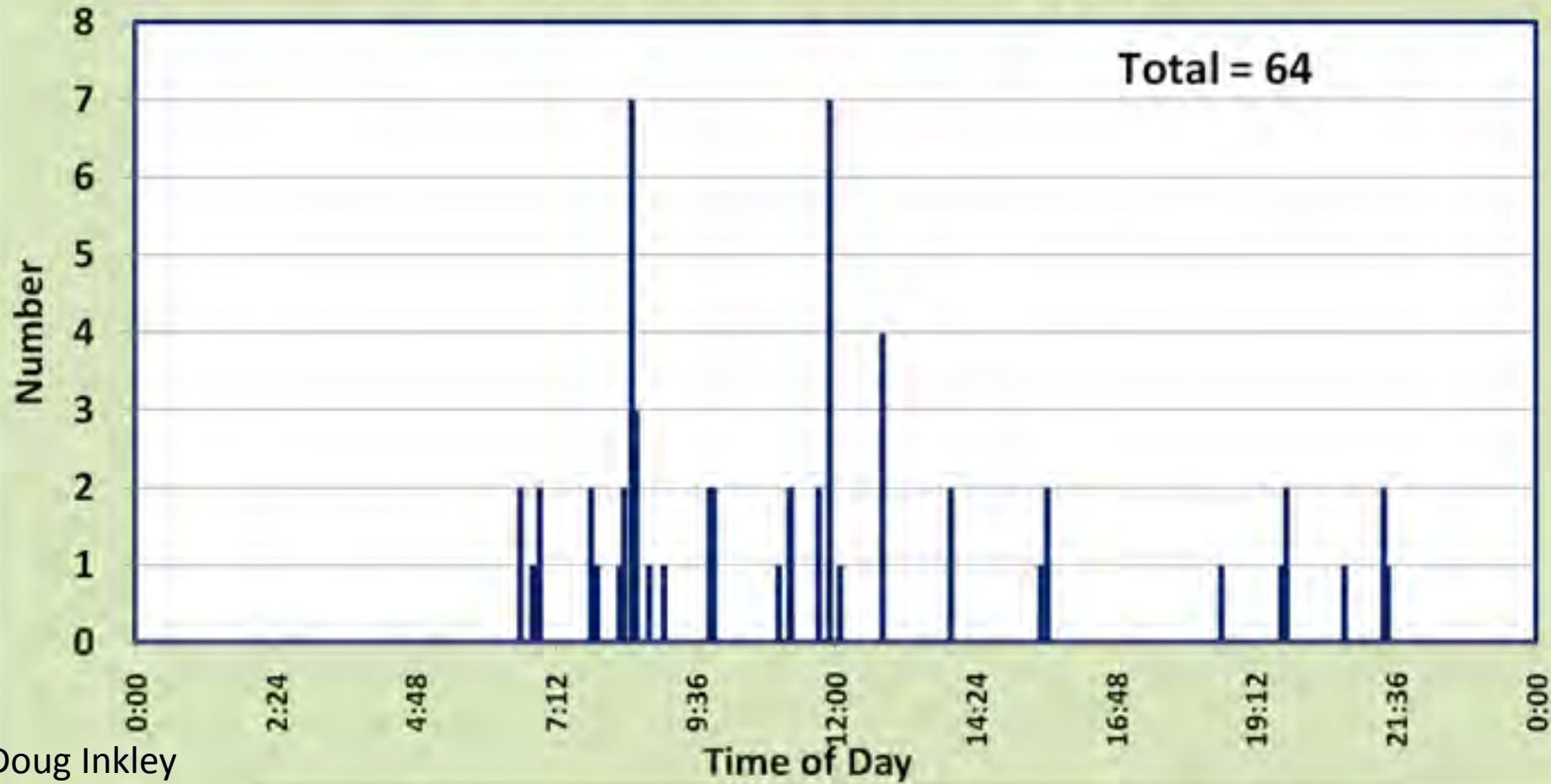


Data collected by
Doug Inkley, Ph.D.
Senior Scientist
National Wildlife Federation

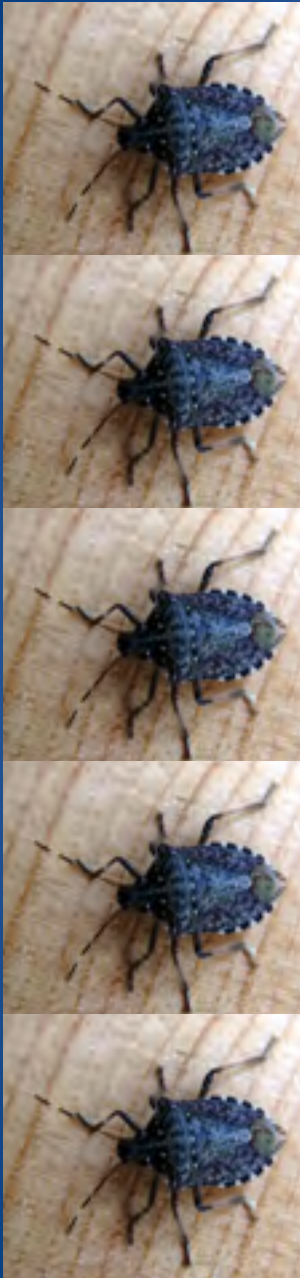
X or More BMSBs (1st & 2nd Floors)

One day of BMSBs, 1st Floor, 3/13/2011

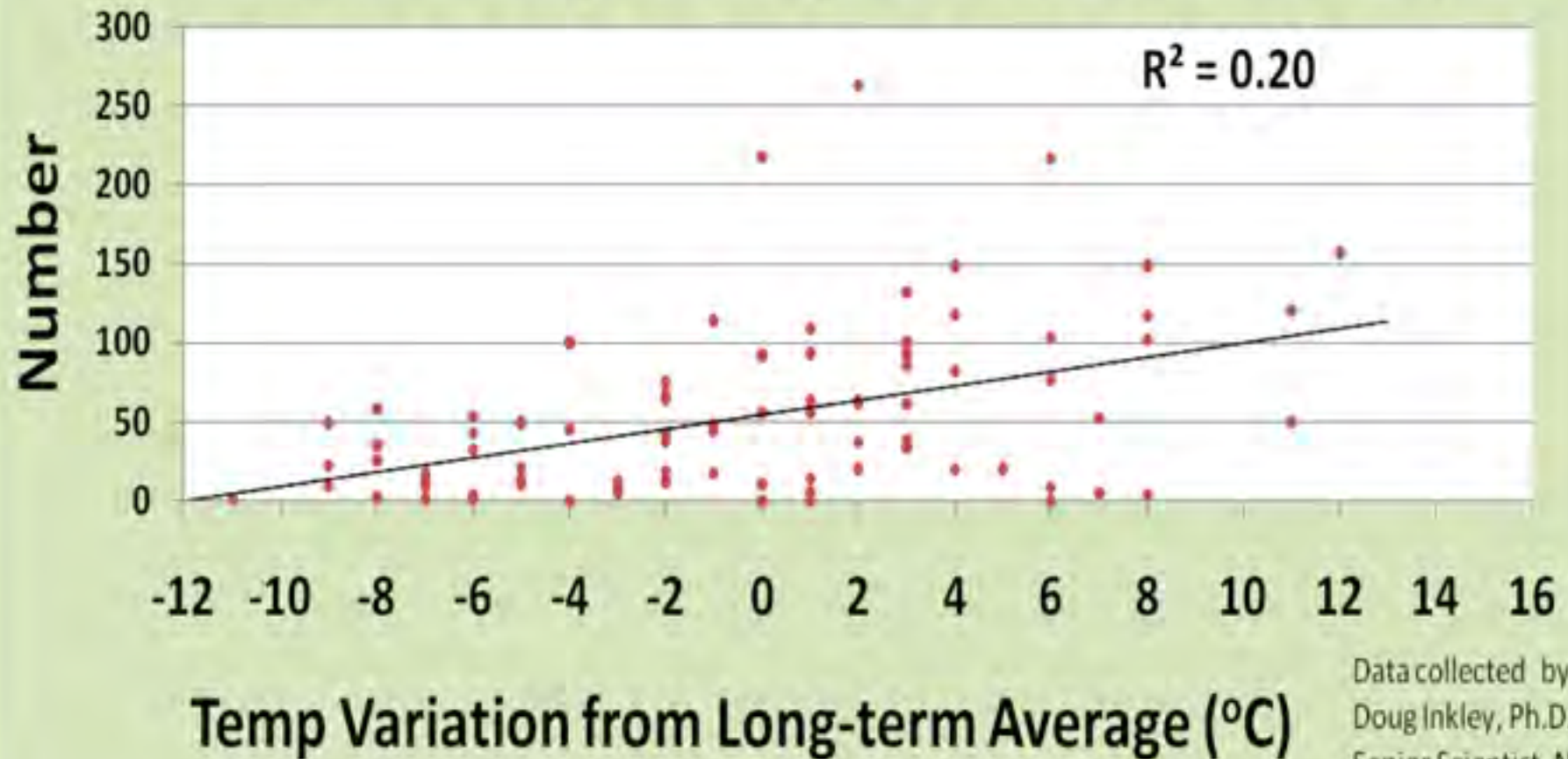
Total = 64



Doug Inkley



BMSB Daily Activity Level (1st & 2nd Floor)



Data collected by
Doug Inkley, Ph.D.
Senior Scientist, NWF



Imagery Date: 7/2/2010

38°22'27.74" N 77°40'53.90" W elev. 1089 ft

Eye alt 1195.15 mi

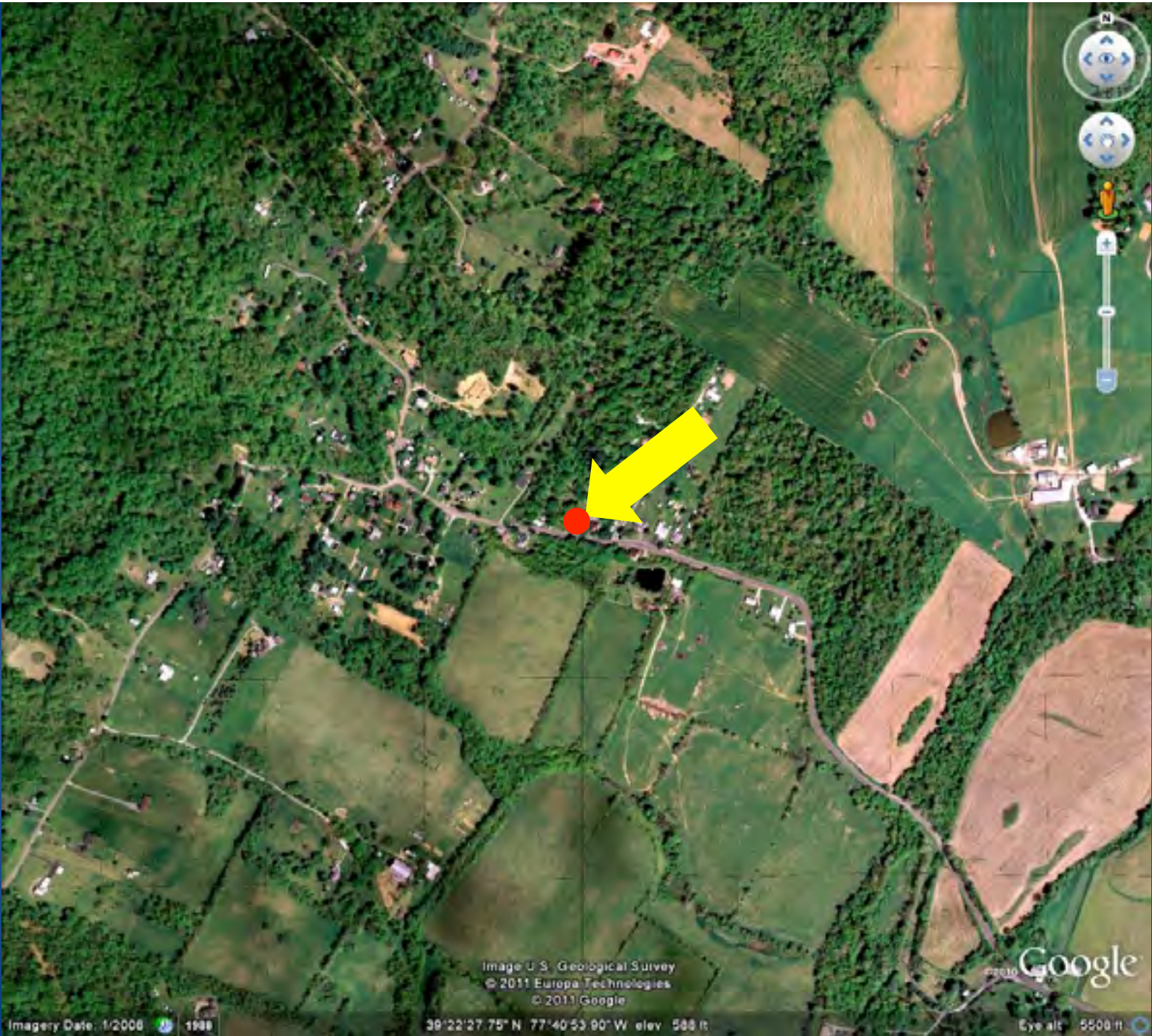


Image U.S. Geological Survey
© 2011 Europa Technologies
© 2011 Google

Google

Imagery Date: 1/2008 1988

39°22'27.75" N 77°40'53.90" W elev. 588 ft

Eye alt 5500 ft



Doug Inkley



Doug Inkley

Fall



Doug Inkley



Doug Inkley



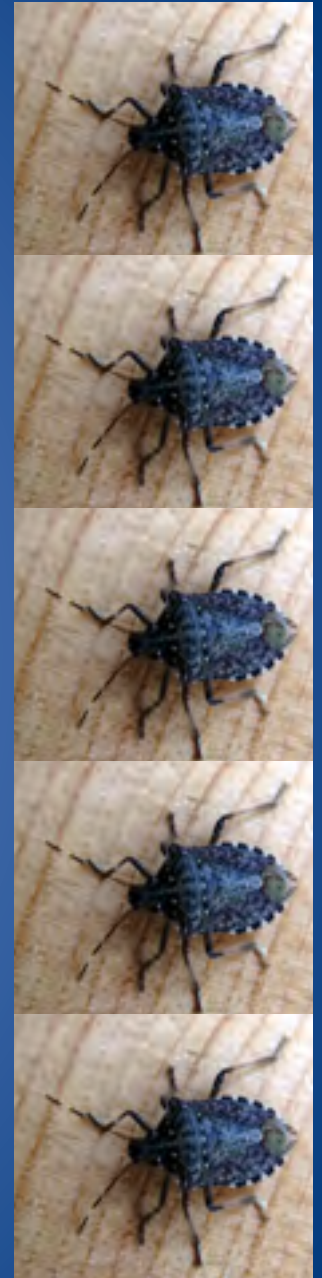
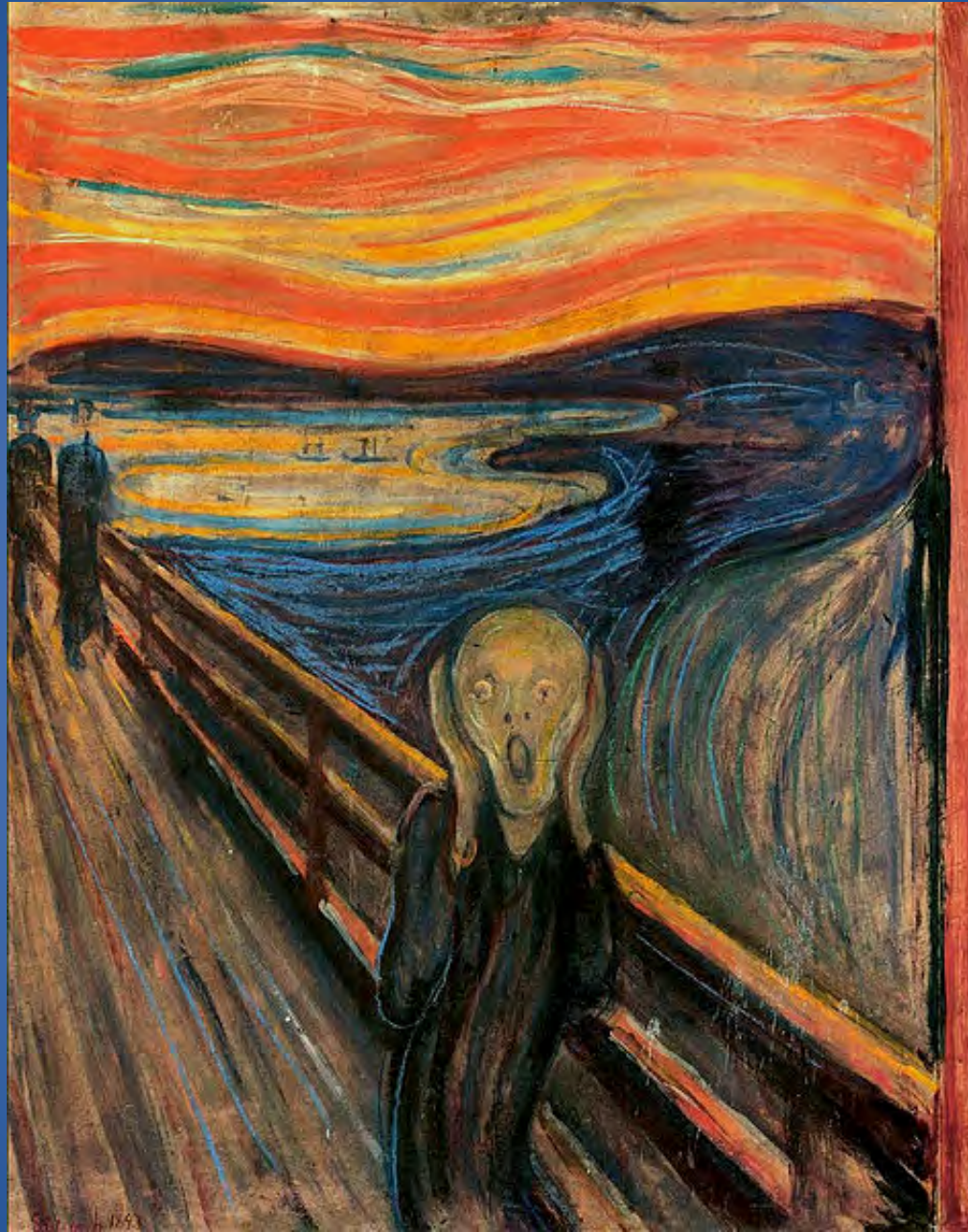
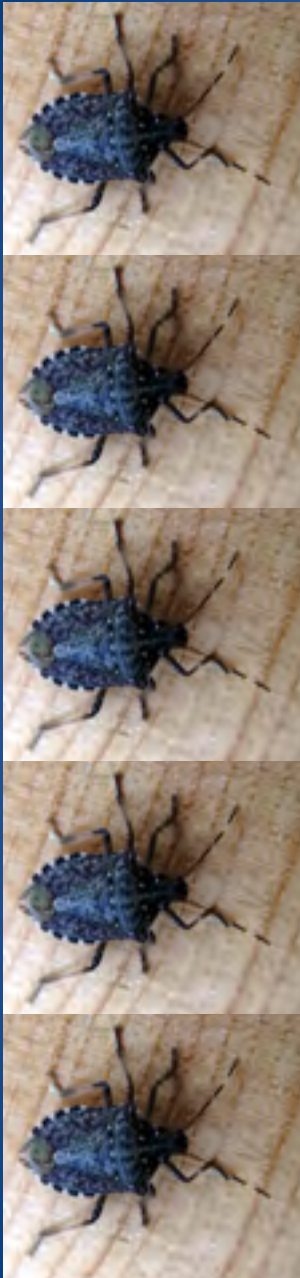
Doug Inkley



Doug Inkley

\$10,000!!







Doug Inkley



Doug Inkley