

# PENNSYLVANIA PRACTICAL EXPERIENCE WITH BMSB MONITORING



Greg Krawczyk, Travis R. Enyeart and Steve Jacobs

Pennsylvania State University, Dep. of Entomology  
Fruit Research and Extension Center,  
Biglerville, PA 17307  
[gxk13@psu.edu](mailto:gxk13@psu.edu)

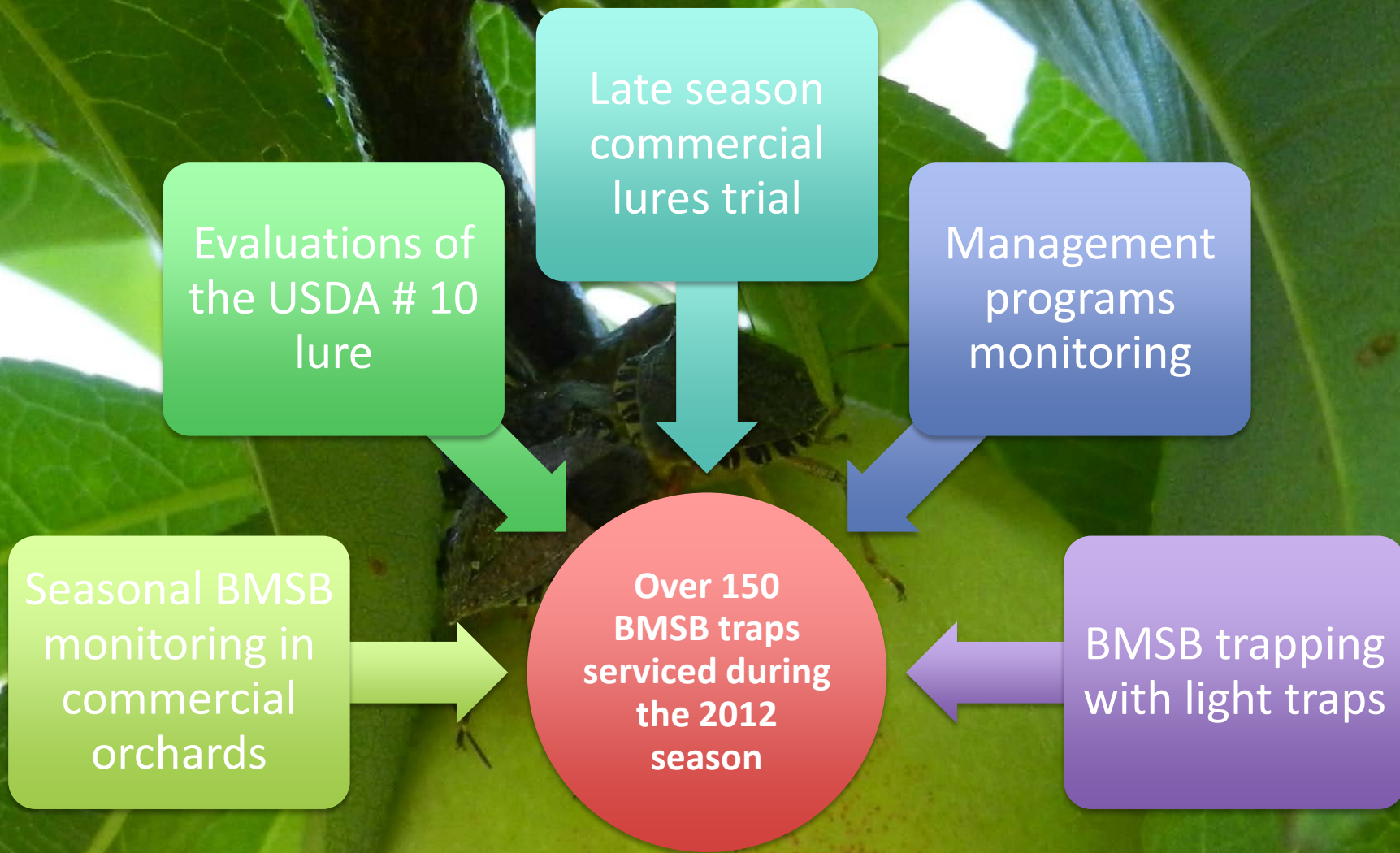


PENNSTATE



College of Agricultural Sciences





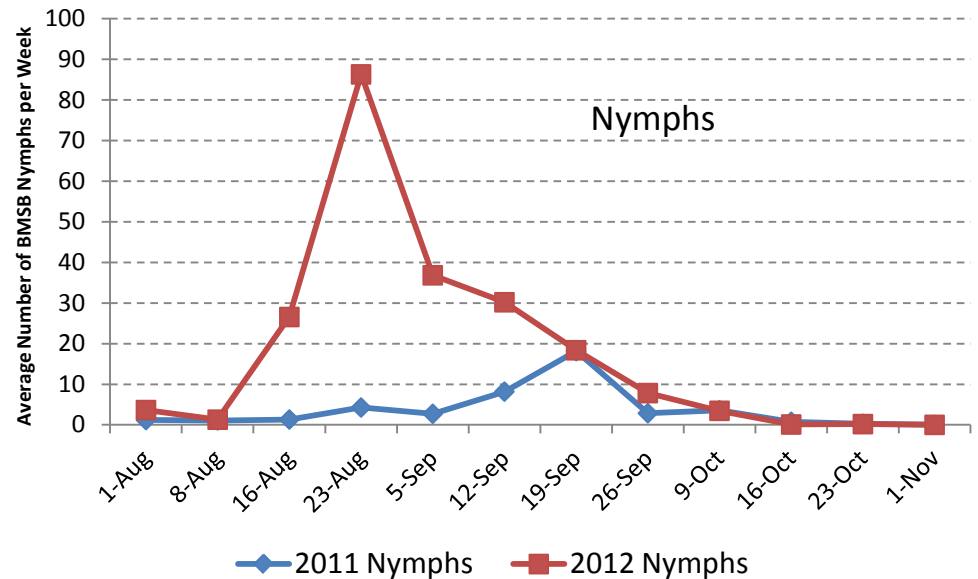
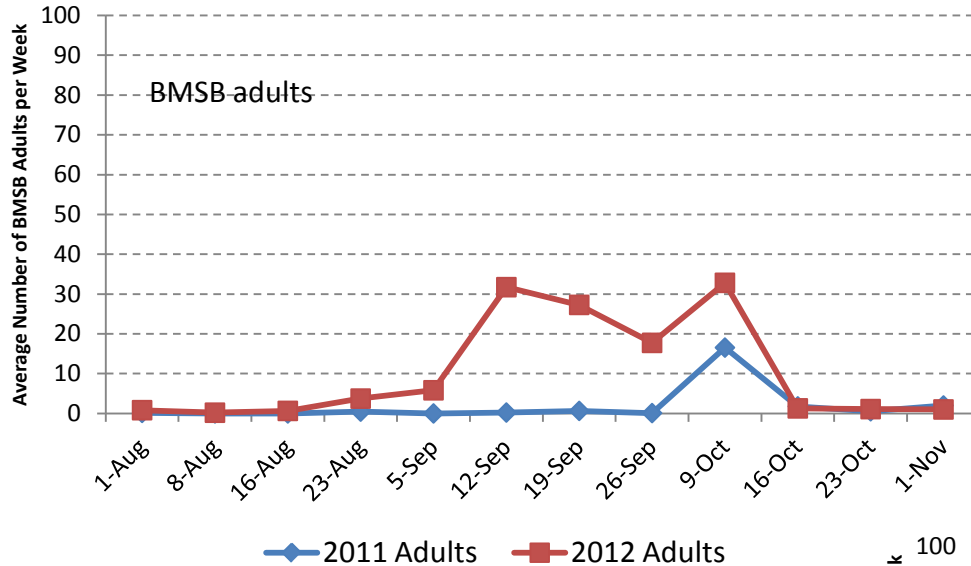
Traps – 10 plus traps designs

Lures – 7 different BMSB lures plus light traps

# 2011 versus 2012 season

Average number of BMSB adults and nymphs per trap/week

Lancaster County, PA Orchard

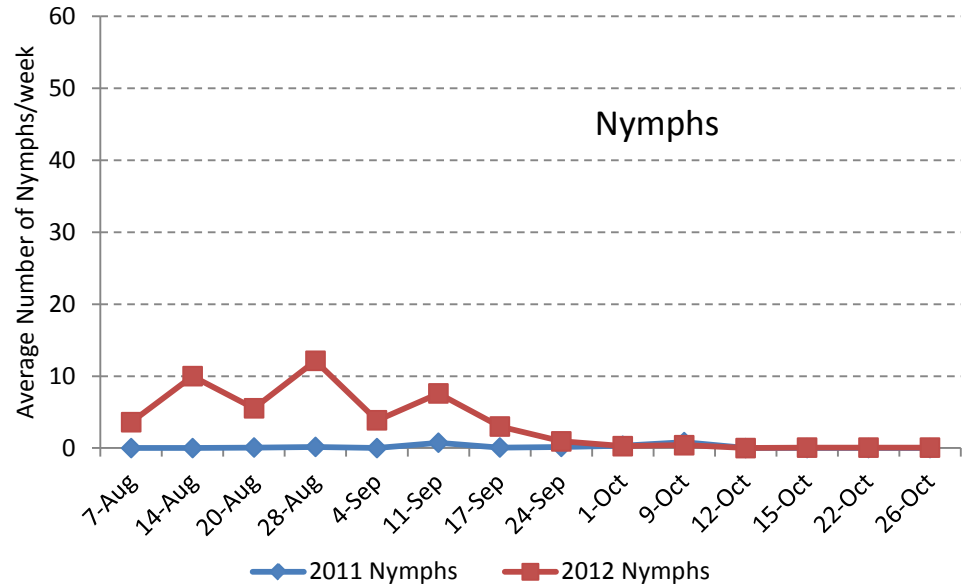
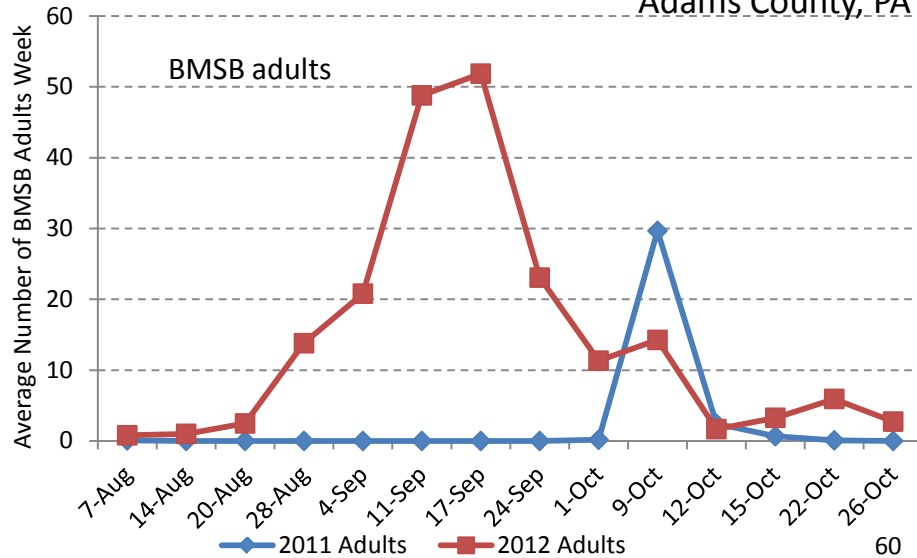


2011 and 2012 trapping data collected using commercially available [Ag-Bio](#) traps and lures

# 2011 versus 2012 season

Average number of BMSB adults and nymphs per trap/week

Adams County, PA Orchard

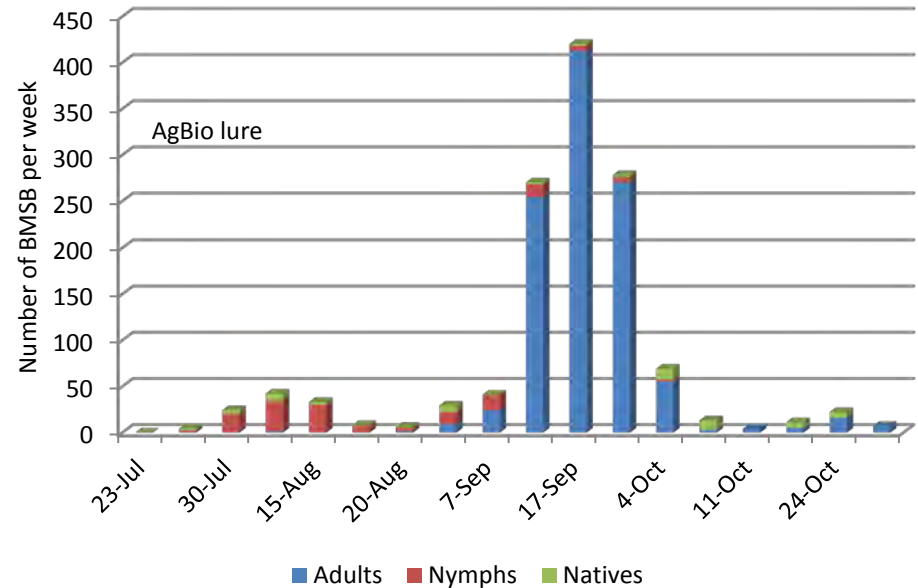
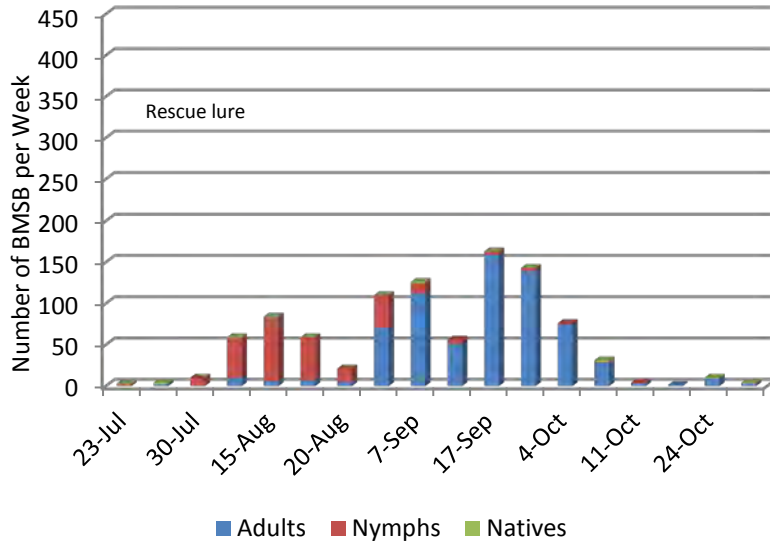


2011 and 2012 trapping data collected using commercially available [Ag-Bio](#) traps and lures



# Comparison of commercial lures available during the 2012 season

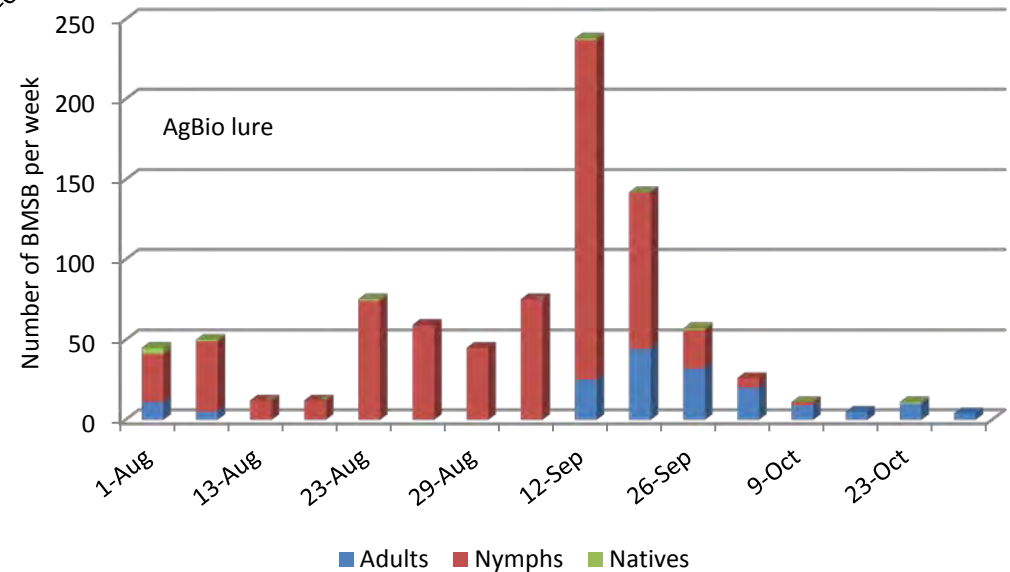
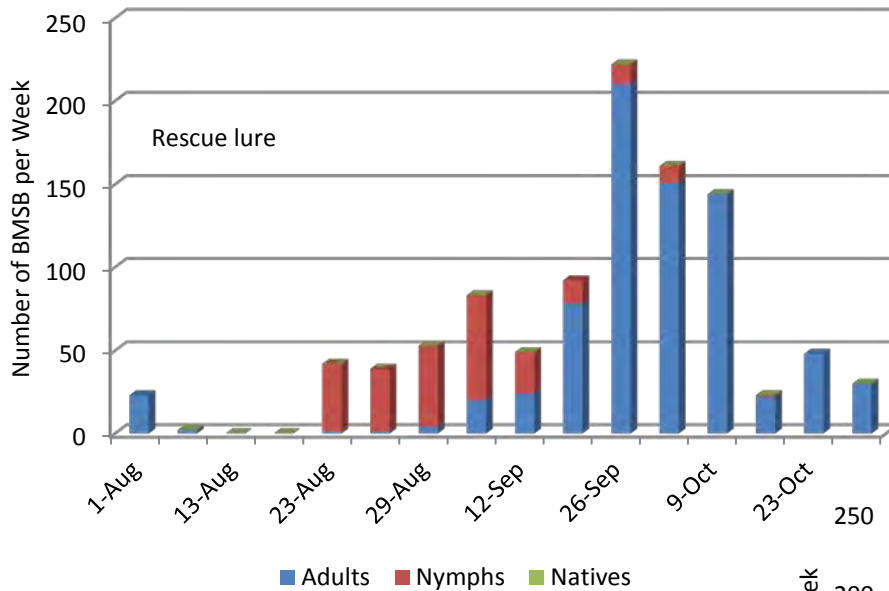
*Adams County, PA 2012*



Total captures of BMSB instars in five traps per treatment located side by side (50 m apart) in commercial apple orchard.

# Comparison of commercial lures available during the 2012 season

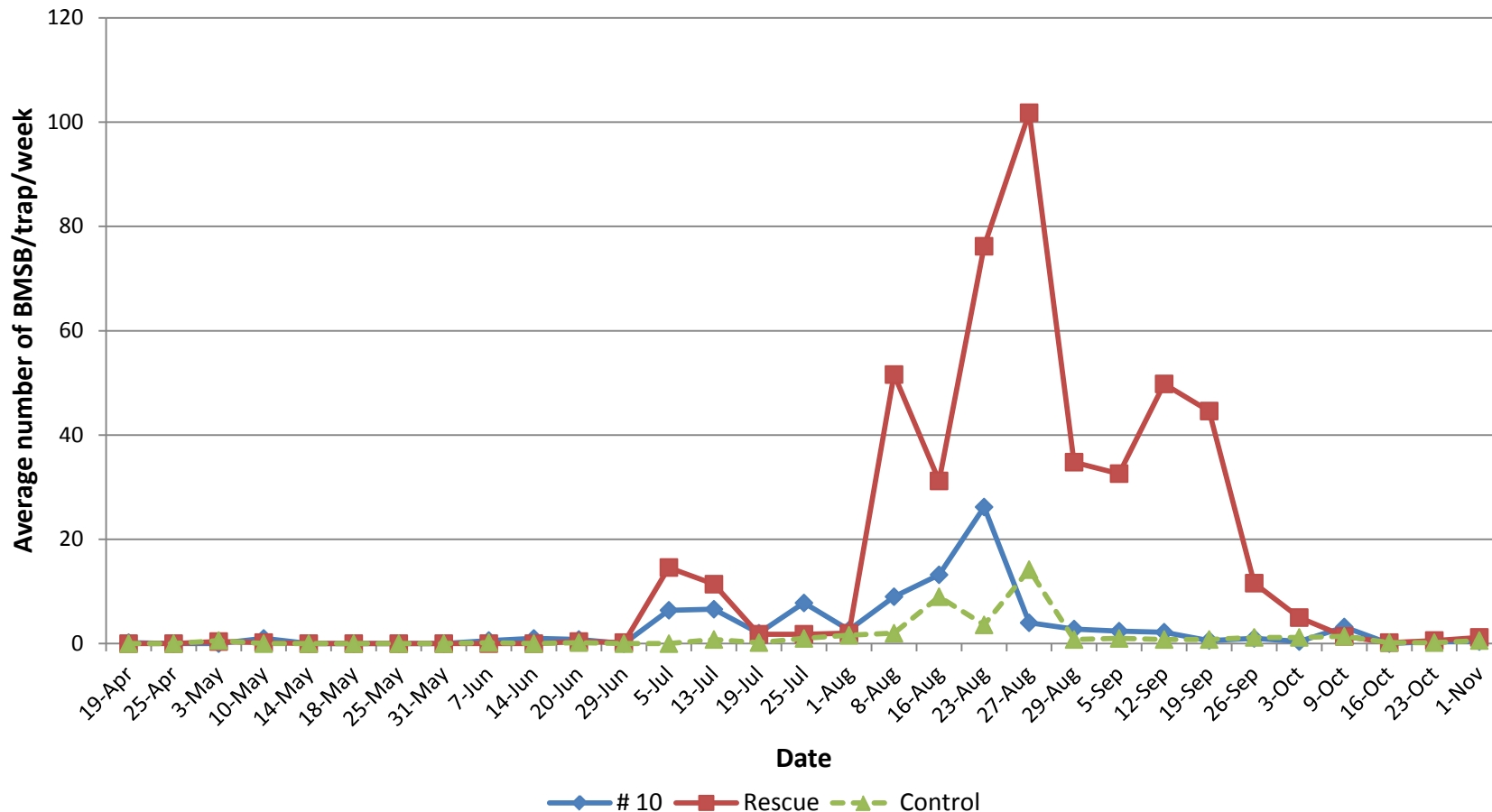
Lancaster County, PA 2012



Total captures of BMSB instars in five traps per treatment located side by side (50 m apart) in commercial apple orchard.

# Seasonal field evaluation of #10 BMSB lure

Lancaster County, PA. 2012 season

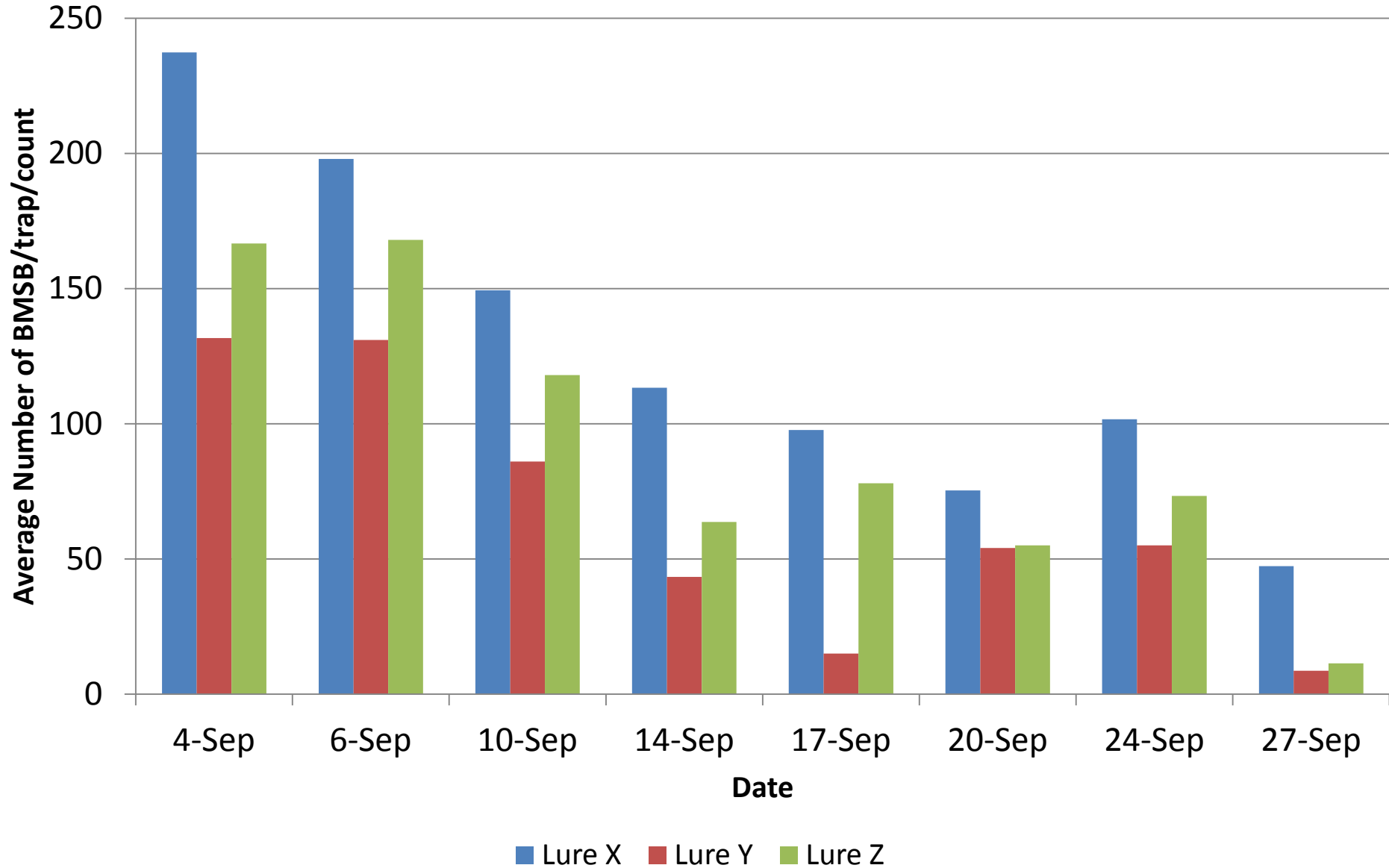


**Site #1.** Five traps per treatment, traps rotated weekly, placed on edge of woods, next to commercial orchard

# BMSB new commercial lures comparison,

Late season BMSB captures

*Franklin County, PA 2012*

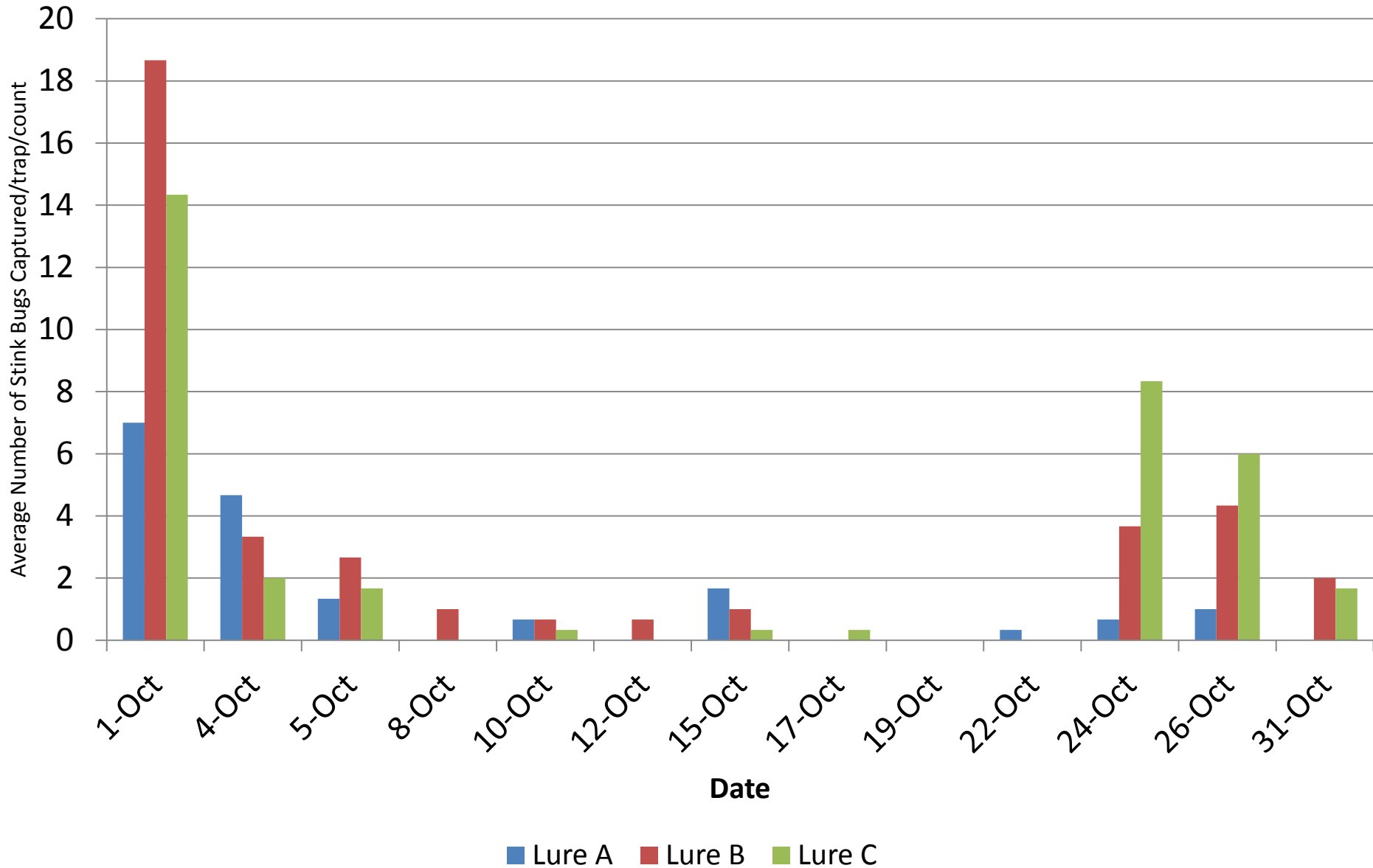




# BMSB new commercial lures comparison,

Late season observations

*Franklin County, PA 2012*



# EXTENSION TREE FRUIT ENTOMOLOGY PROGRAM SUMMER 2012



Our crew:

Deonna Soergel – M Sc Graduate student

Travis Enyart – Research technologist

Amy Baugher, Ryan Callahan, Kerry Campbell, Matt Guise, Andy Goodyear,  
Erica VanDyke, Chris Placentia, Nicole Quinn, Rachel Troyer - Summer assistants

Nicolas H. Ellis – Ph.D. Program support

Financial support:

*State Horticultural Association of PA, Pennsylvania Apple Marketing Board, Pennsylvania  
Department of Agriculture, USDA ARS, USDA NIFA SCRI, Ag-chemical industry*

# BMSB Website Activity

Comparisons Of Past Two Years

*Prepared by  
Steven Jacobs  
PSU Dep. of Entomology*

Overview

Visits vs. [Select a metric](#)

Hourly Day Week Month



803,012 people visited this site

- Visits: 851,929**
- Unique Visitors: 803,012**
- Pageviews: 2,299,619**
- Pages / Visit: 2.70**
- Avg. Visit Duration: 00:01:09**
- Bounce Rate: 83.46%**
- % New Visits: 88.48%**



- 88.48% New Visitor**  
753,790 Visits
- 11.52% Returning Visitor**  
98,139 Visits



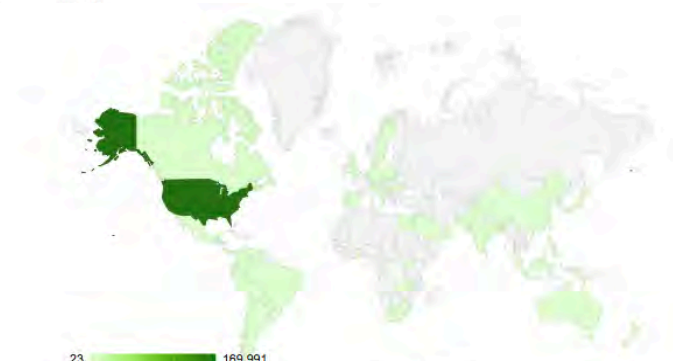
# BMSB World 2011



18 252,017

BMSB	Visits	Pages / Visit	Avg. Visit Duration	% New Visits	Bounce Rate
	<b>262,510</b> <small>% of Total: 6.23% (4,213,069)</small>	<b>2.81</b> <small>Site Avg: 2.95 (-4.76%)</small>	<b>00:01:14</b> <small>Site Avg: 00:02:12 (-44.14%)</small>	<b>86.55%</b> <small>Site Avg: 66.03% (31.09%)</small>	<b>82.19%</b> <small>Site Avg: 63.60% (29.23%)</small>

Country / Territory	Visits	Pages / Visit	Avg. Visit Duration	% New Visits	Bounce Rate
1. United States	252,017	2.82	00:01:13	86.32%	82.21%
2. Canada	3,984	2.52	00:01:41	91.97%	79.47%
3. United Kingdom	800	2.11	00:01:10	91.12%	77.75%
4. Mexico	551	1.32	00:00:06	96.91%	83.85%
5. Spain	516	1.52	00:02:21		



23 169,991

BMSB	Visits	Pages / Visit	Avg. Visit Duration	% New Visits	Bounce Rate
	<b>181,936</b> <small>% of Total: 3.42% (5,323,105)</small>	<b>3.37</b> <small>Site Avg: 2.63 (28.26%)</small>	<b>00:01:23</b> <small>Site Avg: 00:02:03 (-32.72%)</small>	<b>88.15%</b> <small>Site Avg: 72.50% (21.58%)</small>	<b>78.21%</b> <small>Site Avg: 67.09% (16.57%)</small>

Country / Territory	Visits	Pages / Visit	Avg. Visit Duration	% New Visits	Bounce Rate
1. United States	169,991	3.45	00:01:25	87.93%	77.81%
2. Canada	3,465	2.58	00:01:23	90.79%	76.97%
3. Mexico	1,140	1.30	00:00:12	87.98%	82.02%
4. United Kingdom	980	1.40	00:00:41	88.37%	86.02%
5. (not set)	798	2.26	00:01:08	91.35%	82.83%
6. Spain	593	6.27	00:03:51	84.65%	80.78%

# BMSB World 2012





# BMSB U.S. Cities 2011



213  13,445

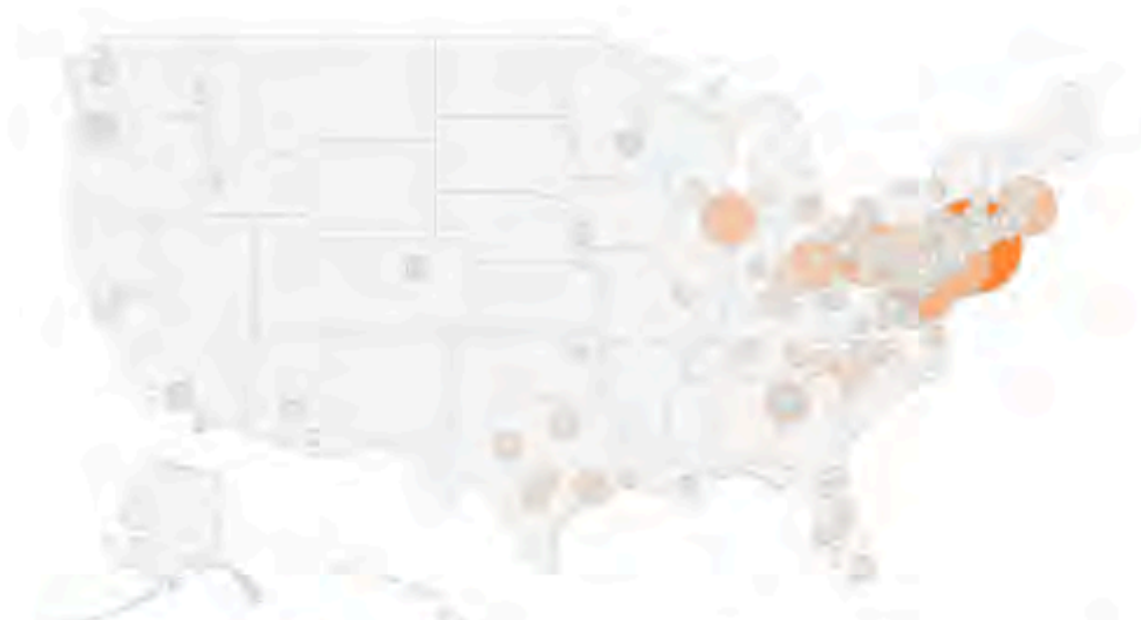
BMSB	<b>Visits</b> <b>252,017</b> <small>% of Total: 5.88% (4,213,069)</small>	<b>Pages / Visit</b> <b>2.82</b> <small>Site Avg: 2.95 (-4.37%)</small>	<b>Avg. Visit Duration</b> <b>00:01:13</b> <small>Site Avg: 00:02:12 (-45.06%)</small>	<b>% New Visits</b> <b>86.32%</b> <small>Site Avg: 66.03% (30.74%)</small>	<b>Bounce Rate</b> <b>82.21%</b> <small>Site Avg: 63.60% (29.26%)</small>
------	---	---	--	--	---

City	Visits	Pages / Visit	Avg. Visit Duration	% New Visits	Bounce Rate
1. New York	13,445	1.45	00:00:37	89.02%	87.04%
2. Pittsburgh	10,048	3.87	00:01:46	69.21%	78.23%
3. Washington	6,793	1.49	00:00:32	86.91%	87.71%
4. Philadelphia	5,869	2.70	00:01:33	84.85%	78.48%
5. Chicago	3,059	1.86	00:00:39	90.13%	81.40%





# BMSB U.S. Cities 2012



137  6,702

BMSB	<b>Visits</b> <b>169,991</b> <small>% of Total: 3.19% (5,323,105)</small>	<b>Pages / Visit</b> <b>3.45</b> <small>Site Avg: 2.63 (31.47%)</small>	<b>Avg. Visit Duration</b> <b>00:01:25</b> <small>Site Avg: 00:02:03 (-31.45%)</small>	<b>% New Visits</b> <b>87.93%</b> <small>Site Avg: 72.50% (21.28%)</small>	<b>Bounce Rate</b> <b>77.81%</b> <small>Site Avg: 67.09% (15.97%)</small>
------	---	---	--	--	---

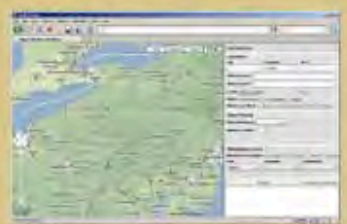
City	Visits	Pages / Visit	Avg. Visit Duration	% New Visits	Bounce Rate
1. New York	6,702	2.27	00:00:56	91.50%	87.42%
2. Washington	3,556	2.36	00:02:03	86.53%	80.76%
3. Philadelphia	3,351	3.99	00:02:00	85.71%	65.29%
4. Pittsburgh	3,214	6.89	00:03:27	73.77%	60.98%
5. Boston	2,439	2.54	00:00:41	89.71%	84.13%



## The Insect

Where is BMSB?  
 The Brown Marmorated Stink Bug  
 Description

## Contribute



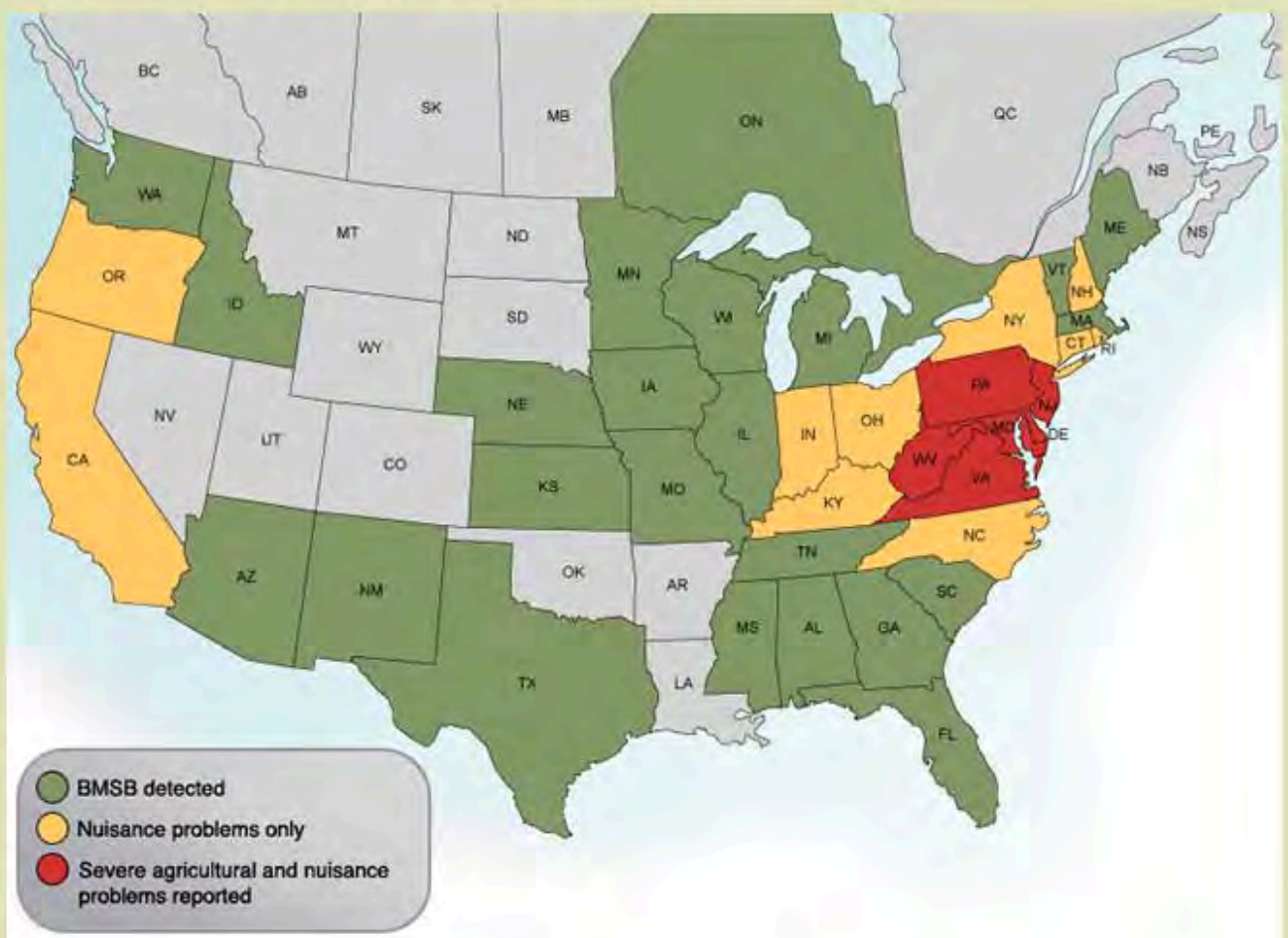
Report Brown Marmorated Stink Bug Sightings

## Explore

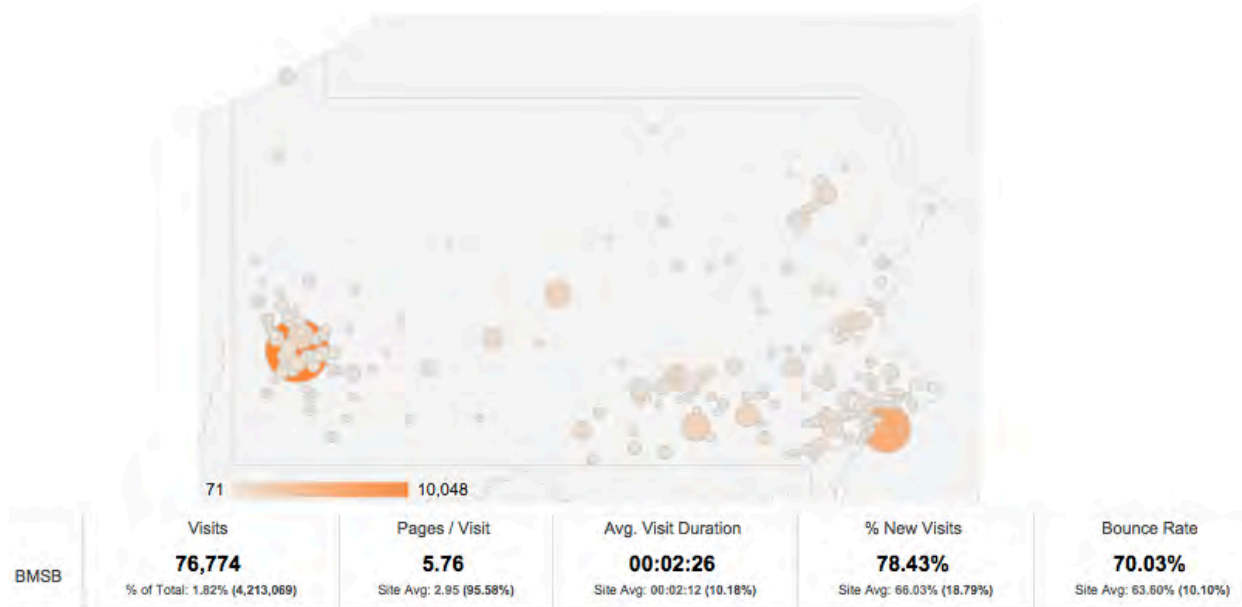


Explore Brown Marmorated Stink Bug Sightings

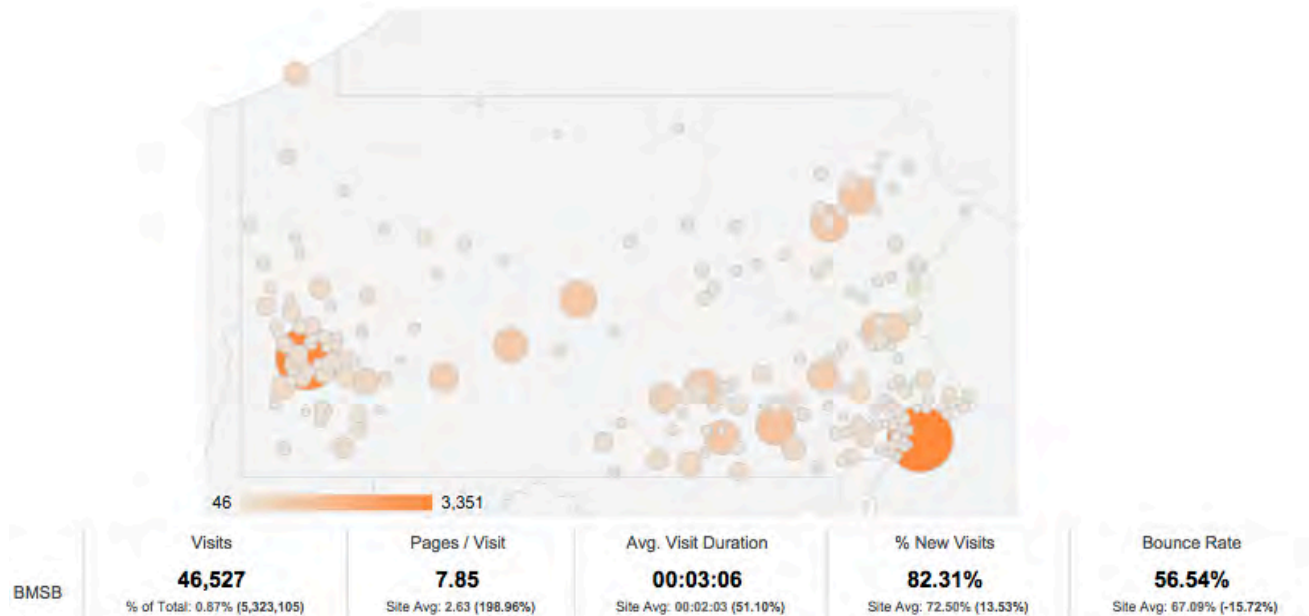
## Where is the Brown Marmorated Stink Bug?



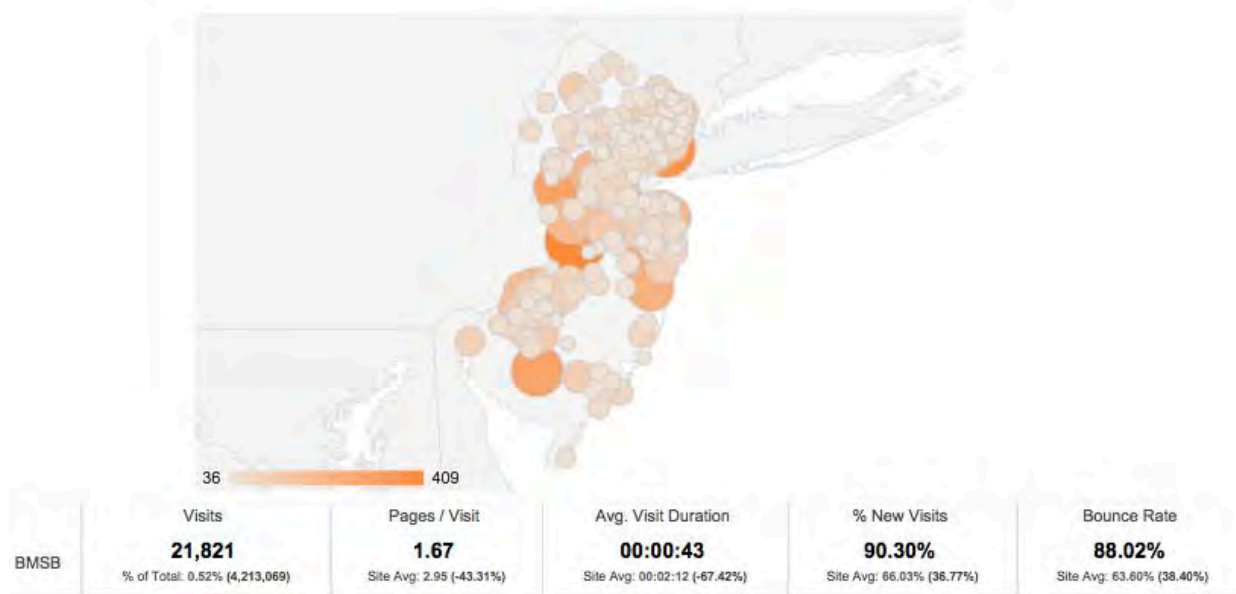
# BMSB PA 2011



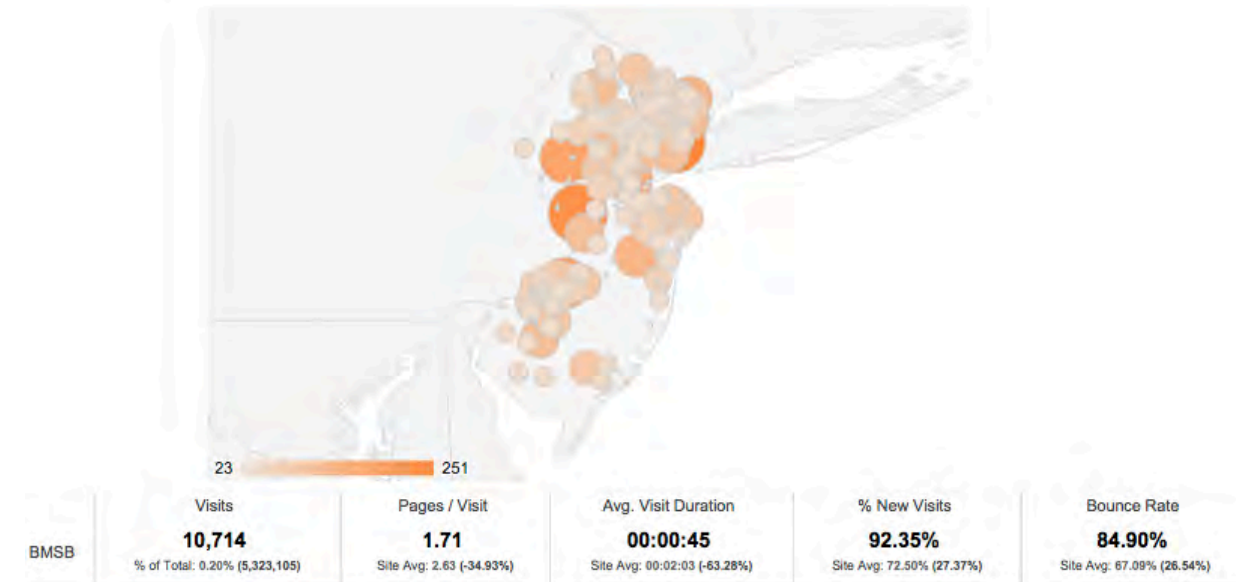
# BMSB PA 2012



# BMSB NJ 2011

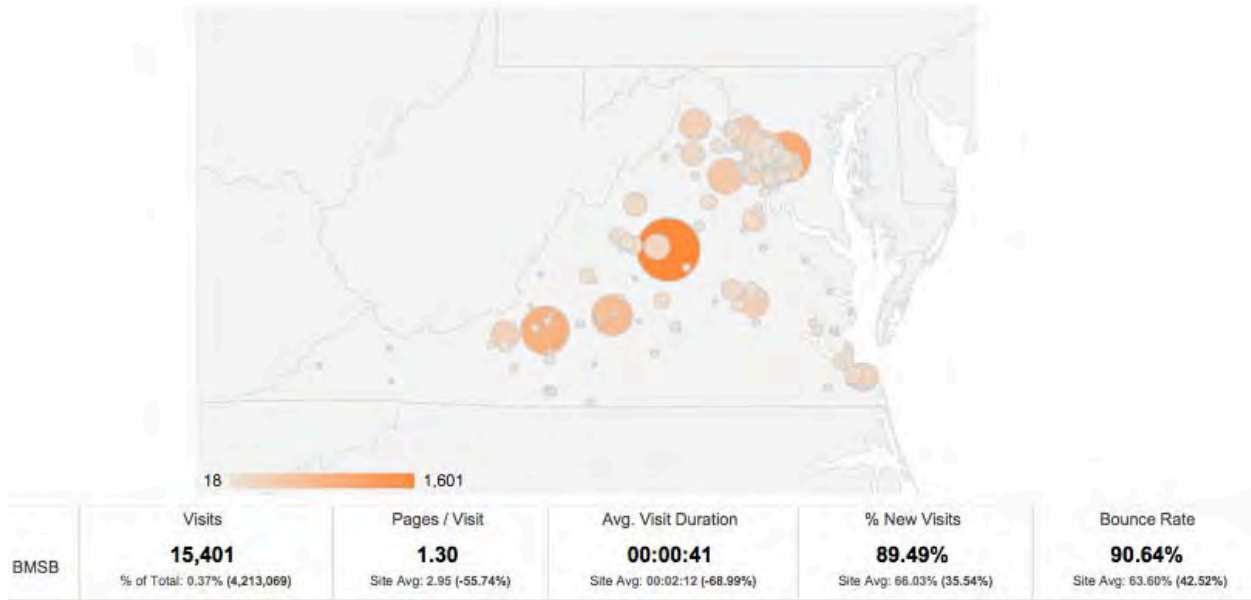


# BMSB NJ 2012

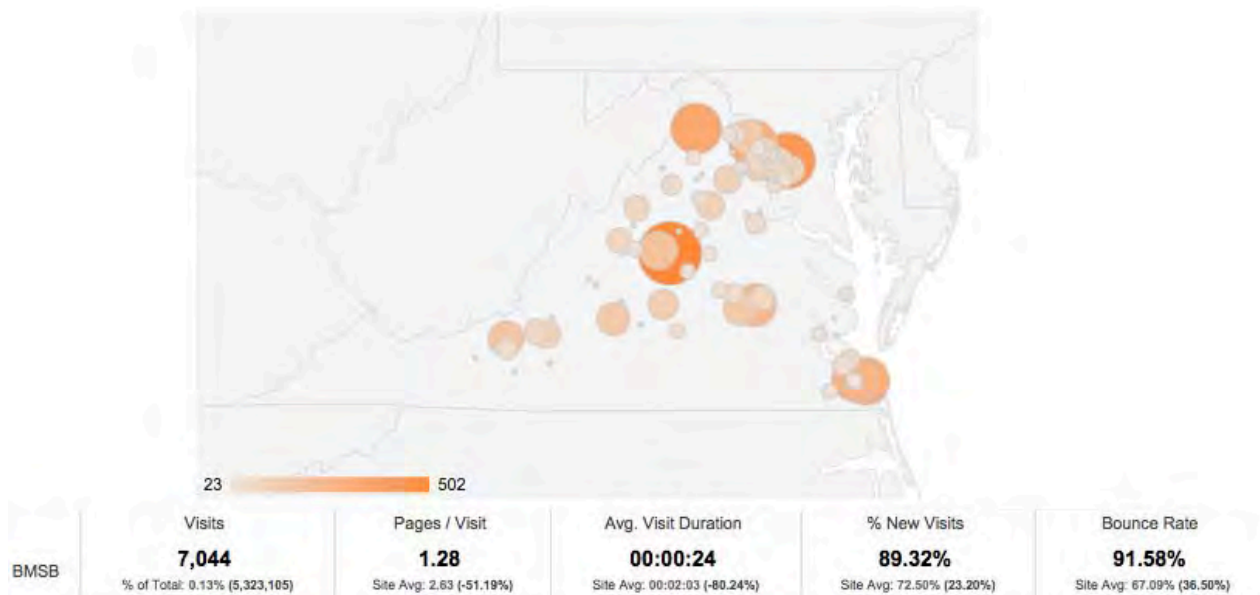




# BMSB VA 2011

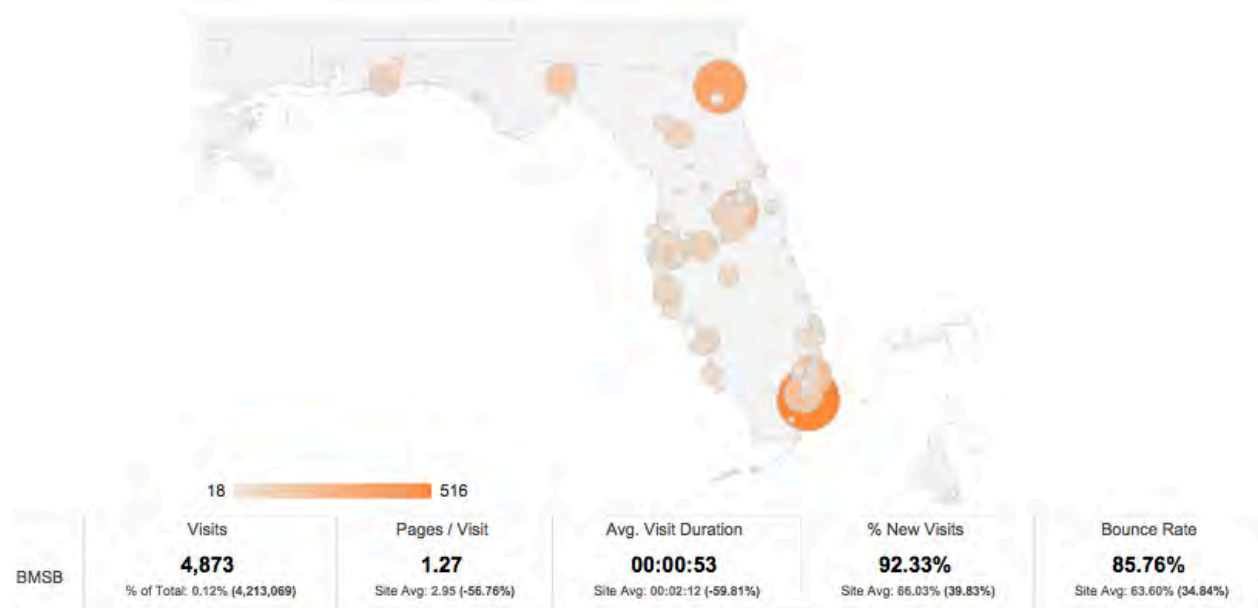


# BMSB VA 2012





# BMSB FL 2011



# BMSB FL 2012

